

Annual Report

2024



A good start in life for the Deaf, for a better future

Prepared by Dr. Hussein Ismail, Director



The Learning Center for the Deaf
مركز التعلم للصم

2024 ANNUAL REPORT

Life Learning Impact on Deaf
Children

Contact Us :



05-954584
79-128433



lcd@lcd-lebanon.org

A Message from the LCD's Director, Hussein Ismail, Ed.D.



Dear Friends and Supporters,

As we reflect on the events and accomplishments of 2024, I am deeply humbled by the resilience and dedication of our team, the unwavering support of our partners, and the strength of the children and families we serve. This year has been one of profound challenges, but also remarkable perseverance and hope.

In the face of unprecedented crises in Lebanon, including the ongoing impacts of war, the mission of the LCD to provide vital services and opportunities to Deaf children remained a beacon of hope. Our commitment to serving these children, despite the numerous obstacles we encountered, has only grown stronger. It is through the grace of God, the dedication of our staff, and the generosity of our supporters that we have been able to continue making a positive impact.

In this report, you will find a detailed account of our activities and achievements over the past year. From educational programs to advocacy efforts, we have worked tirelessly to ensure that Deaf children in Lebanon receive the care, education, and opportunities they deserve. The road has been difficult, but the work we do together is making a difference in their lives, now and for the future.

As we move forward, we remain committed to the mission and vision of the LCD. We will continue to adapt, grow, and innovate to meet the needs of our children and their families. We are confident that with your continued support, we can overcome any challenge and build a brighter, more inclusive future for Deaf children in Lebanon.

Thank you for being a part of this journey. Your support is truly invaluable, and we look forward to the future, filled with hope and possibilities. May you be richly blessed.



Mission Statement

The Learning Center for the Deaf (LCD) is a prominent organization representing individuals with disabilities (OPD), with a strong focus on issues concerning the Deaf community. The majority of its Board and General Assembly members are Deaf. LCD provides a combination of services and advocacy efforts aimed at addressing the needs of the Deaf.

Located in Baabda, LCD offers vital services that were previously unavailable in the country, enhancing existing programs to create better opportunities for Deaf individuals and their families.

The center's main activities revolve around education and empowerment. Key programs include the Early Intervention Program (supporting families of Deaf children), Educational Activities for the Deaf (including Sign Language courses for interested participants), an Integrated Nursery and Preschool (where Deaf and hearing children learn together), and a High School Program (designed to prepare Deaf students for higher education), among others.

Motto of the LCD

"Do for others as you would like them to do for you"

Matthew 7:12

The Annual Report 2024

Life Learning Impact on Deaf Children

Contents

1. The Mission Statement of the LCD / Purpose

2. The Programs Offered at the LCD

3. Basic Data about the LCD

4. Members of the LCD (2024)

- Board of Administration
- Staff List
- Volunteers

5. Statistical Data of the Number of the Beneficiaries

6. News & Activities of the LCD 2024

- I. Introduction
- II. General Situation in Lebanon
- III. Effect of the Situation on the LCD
 - Situation of the LCD
 - Financial Situation of the LCD
 - Family members and students of the LCD
 - The Ceasefire
 - Community Contributions
 - Displaced Deaf People/Families
- IV. Early Intervention Program
- V. Selected Story of 2 Deaf Children
 - Rayan
 - Hussein
- VI. Support Group for Parents
- VII. Challenges undertaken by the LCD
- VIII. Jip & Janneke Nursery and Preschool
- IX. A Message by a Parent
- X. Hearing Aids and Batteries
- XI. High School Program
- XII. Orientation Days for High School Students
- XIII. Graduation Ceremony
- XIV. Project: Construction of Nursery Annex Update
- XV. Intensive Trainings
- XVI. Workshop, Seminars, etc.
- XVII. Workshops for the Deaf
- XVIII. Wafa attended a Congress in UAE
- XIX. First Aid Workshop

- XX. Marathon
- XXI. Interview on a Radio
- XXII. Sign Language on the Local TV
- XXIII. Sign Language in the Nursery/Preschool
- XXIV. Sign Language Development Work
- XXV. Sign Language Courses
- XXVI. LCD's Project Works
- XXVII. Annual School Trip
- XXVIII. Advocacy Work
- XXIX. Launching a Platform
- XXX. Teachers' Day
- XXXI. Preparation Work before the School Starts
- XXXII. A Marketing and Employment Exhibition
- XXXIII. Our Faithful Partners and Sponsors
- XXXIV. Conclusion

7. Master Account 2024 (prepared by the certified auditor)

- Income / Expenditures
- Balance Sheet
- Financial Summary Sheet with the Pie Figures

8. Photos - Activities



1. The Mission Statement of the LCD

The Learning Center for the Deaf (LCD) is a representative organization for persons with disabilities (OPD), with a primary focus on issues affecting the Deaf community. Deaf individuals make up the majority of the Board and General Assembly, alongside Deaf staff and management. LCD combines both service provision and advocacy work.

LCD is a non-profit, non-political, and non-sectarian organization located in Baabda-Brasilia, Lebanon, dedicated to addressing the urgent needs of Deaf individuals in the country. Its mission is to provide high-quality services with an emphasis on education as a tool for change and progress for the Deaf community.

The management and teaching team at LCD are committed to empowering Deaf individuals, as well as their families, and reaching out to the hearing world with information to promote awareness of Deafness. The organization's focus is to advocate for the rights of Deaf individuals, particularly the right to accessibility and inclusion in society, always striving for justice, equal opportunities, and respect for human dignity.

To meet the needs of the Deaf community, LCD has launched innovative services and programs that were previously unavailable in Lebanon. These initiatives complement existing services, offering better opportunities for Deaf individuals and their families. One of the most recent programs involves providing Sign Language interpretation services, among others.

All of LCD's services are designed to create positive change. The organization also leads several rights-based initiatives, working to influence legislation and policies, often in collaboration with other OPDs.

In addition to these initiatives, LCD has developed two major, unique programs: the Early Intervention Program (launched in 2001) and the High School Program (launched in 2003).

The High School Program provides Deaf students the opportunity to take the official Baccalaureate exams, allowing them to attend university, just like their hearing peers.

The Early Intervention Program is a comprehensive, family-based program for children aged 0-3 years. It empowers families with tools to create a rich, supportive environment that promotes the child's overall development, with a particular focus on communication and language. This early intervention plays a crucial role in determining the quality of life for many Deaf children, laying the foundation for their future well-being.

For the further details of the LCD's programs and activities, please go to the website page www.lcd-lebanon.org

And for the continuous updated information, please visit to our Facebook page: <https://www.facebook.com/Learning.Center.Deaf.Lebanon/>

2. The Programs Offered at the LCD

To meet the needs of the Deaf community, the LCD offers a range of programs, which include the following:

1. ***The Early Intervention Program (birth to six years)*** supports families of Deaf children from infancy onward, aiming to prevent developmental delays, particularly in language. The program focuses on restoring and strengthening the relationship between the child and their parents while empowering the family to create a healthy, nurturing, and loving environment for the child's growth.

Additional components of the Early Intervention Program include:

- a. the **Support Group** for parents of deaf children
 - b. the **Course** related to deafness for parents of deaf children
 - c. the **Integrated Nursery** for deaf and hearing children
 - d. the **Resource Room** for parents, students, and professionals
 - e. the **John Tracy Clinic sequential lessons** for parents of deaf children
2. ***The High School Education for the Deaf*** provides Lebanon's only secondary program for Deaf students, offering them the opportunity to pursue higher education at the university of their choice, thereby promoting a positive image of the Deaf community.
 3. ***The Preschool Section (ages 3 to 6)*** is a regular school setting that spans from KG 1 to KG 3, preparing children to enter the first grade. Launched in October 2017, this program is designed for both Deaf and hearing children, fostering an inclusive learning environment.
 4. ***Educational Activities for the Deaf*** are designed to help adult Deaf individuals learn and improve specific subjects, such as English language, computer literacy, and social skills, while also providing opportunities for empowerment. This program also offers Sign Language courses for anyone interested in learning.
 5. ***Advocacy*** involves working with stakeholders to ensure that Deaf individuals receive their basic rights across various domains, promoting greater awareness and support for the Deaf community.
 6. ***Awareness programs about deafness and deaf people***, which has as an objective to promote the image of deaf people incorporates activities through media, brochures, and books. Activities in regular nursery settings as well as activities in school and university settings (experiment, telling a story interacting with a deaf puppet and introducing a deaf adult teaching some signs) are provided.
 7. ***Awareness programs*** about Deafness and Deaf individuals aim to improve the image of the Deaf community. These programs include activities through media, brochures, and books, as well as interactive sessions in nursery, school, and university settings. Activities may include experiments, storytelling with a Deaf puppet, and introducing a Deaf adult to teach basic signs.
 8. ***Consultation*** provides guidance and advice to families of Deaf children, as well as to Deaf adults, offering support on various aspects of communication, development, and integration.

9. **Sign Language Courses** offer training for teachers of the Deaf, specialists, university students, and other interested individuals, with a primary focus on enhancing communication access for Deaf persons.

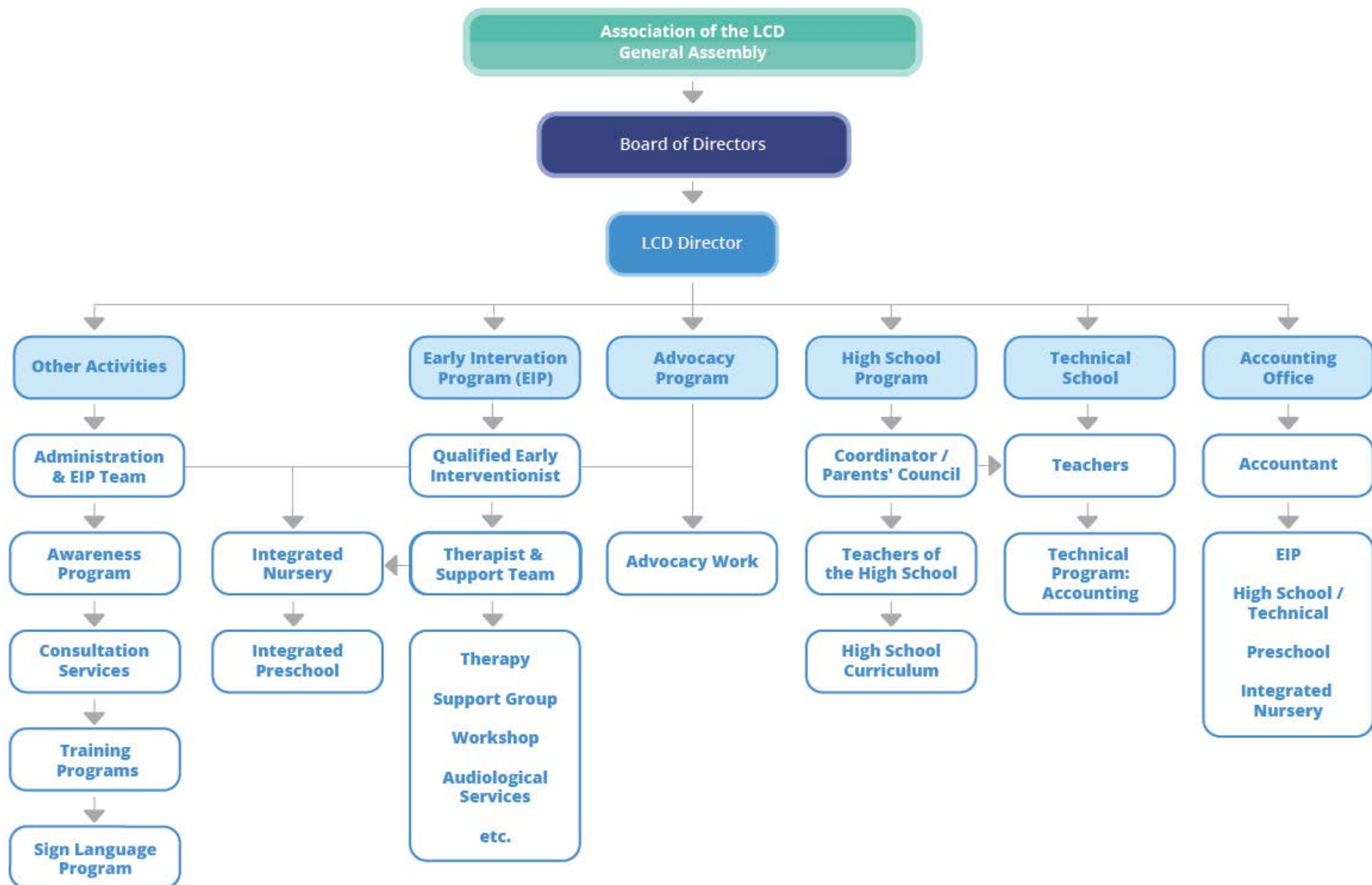




3. The Basic Data about the LCD

Name	The Learning Center for the Deaf (LCD)
Date established	January 2002
Legal status	<ol style="list-style-type: none"> 1. Charity Registration Number: AD 89, established 2002 with the Lebanese Government 2. Presidential Decree No.: 15798, established 2005 3. License # 2/294, 2024 (the Integrated Nursery)
Visiting address	Sacre Coeur Hospital Crossing, Presidential Palace Road, Near Evangelical Church, Brasilia – Baabda
Contact person	Hussein Ismail, Ed.D. Director
Telephone numbers	00961-5-954584 / 00961-79-128433
Fax number	00961-5-954584
E-mail address	lcd@lcd-lebanon.org
Website	www.lcd-lebanon.org
Facebook	www.facebook.com/Learning.Center.Deaf.Lebanon
Instagram	lcd.lebanon
Type of organization	The LCD is a non-profit, charitable, non-sectarian, non-governmental organization, and an Organization for Disabled Persons established to promote, support, and empower Deaf men and women through education across Lebanon.
LCD's Motto	Based on the Lord Jesus's essential statement: <i>"Do for others what you would like them to do for you"</i> . Matthew 7:12
Main areas of activity	Education, Rehabilitation, Consultations, and Advocacy

4. The Organization Chart of the Learning Center for the Deaf (LCD)





The Learning Center for the Deaf (LCD)

The High School Education for the Deaf

The Integrated Nursery "Jip & Janneke"

Brasilia - Baobda 05-954 584 / 03-700 584

5. The Structure of the Learning Center for the Deaf (2024)

Board of Administration	
Chairman of the Board	Ms. Caroline Haykal (deaf)
Treasurer	Ms. Najah El Hamad (deaf)
Secretary	Dr. Hussein Ismail (deaf)
Accountant	Mr. Hisham Selman (deaf)
Members of the Board	Mrs. Charlotte Khalil Dr. Raed Mohsen Dr. Assadour Khanjian

Staff List	
1. Director / Instructor	Dr. Hussein Ismail (deaf)
2. Accountant / Auditing Office	Mr. Antoine Faddoul / Mrs. Stephanie Amar
3. Office Manager / Secretary	Mrs. Christine Jarrouje
4. Speech Therapist / Early Interventionist	Mrs. Wafa Nawar
5. Coordinator	Mrs. Carine Momdjian
6. Assistant Speech Therapist	Ms. Nadine El Khalil
7. Occupational Therapist	Ms. Laura Tawk
8. Domestic Helper	Mr. Abdallah Al Hakim
9. House Mother – Handicraft Teacher	Ms. Najah El Hamad
10. Nursery Teacher for Deaf Children	Mrs. Waddad Daher
11. Nursery Teacher Assistant Teacher	Ms. Vana Markarian
12. Nursery Teacher	Mrs. Marwa Kansa
13. Preschool Teacher - English	Ms. Cosette Melko
14. Preschool Teacher	Mrs. Roula Farhat
15. Preschool Teacher – Arabic	Mrs. Darine Nakour
16. Specialist/Teacher for the Deaf	Ms. Hanna Tahan
17. Cook	Mrs. Sabine Nakour
18. Biology & Chemistry Teacher	Mrs. Hiba Najjar
19. Socials, Arabic Literature Teacher	Mrs. Rozana Zaklit
20. English Teacher	Mrs. Zeena Barghout
21. Math and Physics Teacher	Mr. Nerimane Wehbe
22. P.E. Teacher	Ms. Nour Zgheib (deaf)
23. Advocacy	Mrs. Malak Reslan (deaf)
24. Coordinator for Afternoon Sessions	Dr. Assadour Khanjian

Volunteers	
25. Advocacy	Mr. Saeed Shaaban
26. LCD's legal advisor	Mt. Rayan Kouatly
27. Psychologist – Family Counselor	Mrs. Charlotte Khalil
28. Hearing-Aid Technician	Different settings
29. Family Counselor	Dr. Raed Mohsen



Statistical Data on the Number of Beneficiaries Before and After the Crisis

Before the Crises:

Programs offered at the LCD	Number of Beneficiaries
Early Intervention Program	
Rehabilitation for Deaf Children with their Parents	33 (average - in house children)
The Support Group	55 approx.
Integrated Nursery	6 - 8 families
The Preschool Section	25 (average)
The Outreach Program	16 (average)
The Resource Room	Unspecified
Advocacy	Unspecified; open for all professionals
Educational Activities for the Deaf	National Level
Sign Language Class	81 participants
High School Education for the Deaf	
Third Year	5 students
Preparatory	1 Student
Consultations	120+
Hearing Aids	119 (178 Hearing Aids)
Awareness Programs about Deafness	Unspecified; National level

Since October 2023 and during 2024

Programs offered at the LCD	Number of Beneficiaries
Early Intervention Program	
Rehabilitation for Deaf Children with their Parents	26 (average - in house children)
The Support Group	50 approx.
Integrated Nursery	4 - 6 families
The Preschool Section	10 (average)
The Outreach Program	9 (average)
The Resource Room	Unspecified
Advocacy	Unspecified; open for all professionals
Educational Activities for the Deaf	National Level
Sign Language Class	42 participants
High School Education for the Deaf	
Third Year	5 students (0 after Oc. 2024)
Preparatory	1 Student
Consultations	90+
Hearing Aids	95 (160 Hearing Aids)
Awareness Programs about Deafness	Unspecified; National level

Result: As observed in the table above, the number of children enrolled in the Nursery and Preschool sections has significantly declined due to the situation. Consequently, the income from these sections, which are the backbone of the LCD's revenue, has also decreased.

The Learning Center for the Deaf

Beirut – Lebanon



News & Activities of the LCD during 2024

6. News of the Learning Center for the Deaf



Introduction

We are delighted to share with you the 2024 report, offering a comprehensive overview of the activities and services provided by the LCD throughout 2024. This news section is designed to give you an in-depth understanding of our ongoing work supporting Deaf children in Lebanon, as we continue to provide crucial services and programs for those in need.

The report begins with an overview of the situation in Lebanon, offering readers a general understanding of how the Lebanese people face and navigate their daily lives. Following that, the report provides detailed information about the work and activities of the LCD.

The year 2024 presented us with extraordinary challenges as Lebanon faced ongoing crises due to the war. These events impacted various aspects of our work, but our commitment to supporting children remained unwavering. In this report, particularly in the news and activities section, you will gain insight into the full scope of our efforts during this difficult period.

The challenges we encountered were unlike any we have faced since the founding of the LCD in 2002. However, we did our utmost to continue serving the children during these trying times.

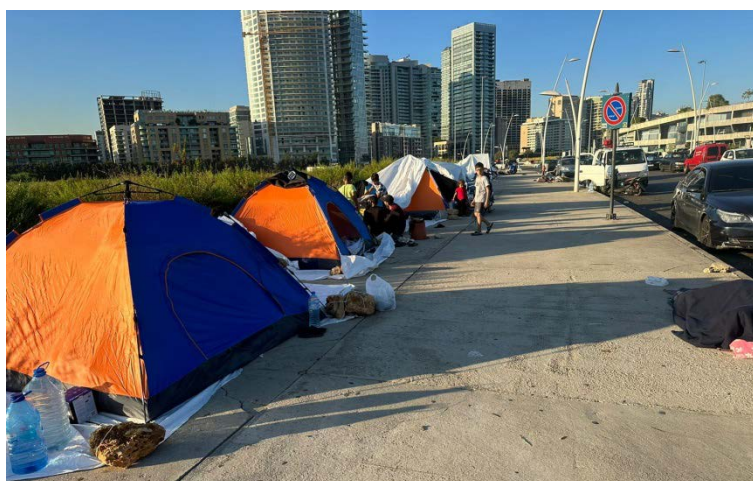
Despite the difficulties, we are deeply grateful to Almighty God for His constant guidance and protection, as well as for the blessings He has granted us. He understands the needs of both the LCD and the children we serve, always providing at the perfect time.

As Psalm 46:10 reminds us: “Be still, and know that I am God; I will be exalted among the nations, I will be exalted in the earth.” We place our full trust in Him, knowing that He is powerful and in control, watching over our lives, our challenges, and the services we provide.

General Situation in Lebanon

Lebanon faces a multifaceted crisis marked by political instability, economic collapse, and social unrest. The economy has suffered hyperinflation, a severe devaluation of the currency, and rising poverty rates, pushing many into unemployment and hardship.

Additionally, Lebanon is still dealing with the aftermath of the 2020 Beirut port explosion, which caused extensive damage and loss of life. The country also grapples with the challenges of hosting a large number of Syrian refugees, further straining its resources. Since October 2023, the conflict in Lebanon has escalated dramatically, with Israeli airstrikes hitting towns in the South and Bekaa Valley, and further intensifying in September 2024 with strikes on Beirut’s southern suburbs. These attacks have forced over 1.2 million people to flee their homes, many seeking refuge in overcrowded urban areas.



With shelter in short supply, countless families have been left with no choice but to sleep on the streets, facing dire conditions. Reports highlight severe shortages of food, clean water, and sanitation, with vulnerable groups—especially children and the elderly—bearing the brunt of the crisis. Humanitarian organizations are calling for urgent assistance to address this growing disaster.

Effect of the Situation on the LCD

Situation of the LCD

Since October 2023, the ongoing crisis in Lebanon has forced many families of hearing children, who are key contributors to our nursery and preschool sections, to leave the country. Others were reluctant to enroll their children due to the uncertain situation. This has led to a significant decline in revenue for the LCD, as the Nursery and Preschool sections have long been a crucial source of financial support. The sharp drop in income has, understandably, placed a strain on our overall financial stability.

Financial Situation of the LCD

The situation in Lebanon, since October 2023, has significant implications for the operations of the Learning Center for the Deaf (LCD), especially in finance. Here are several ways in which the current challenges affect the LCD’s work:

1. Economic Challenges

- **Funding Shortages:** The ongoing economic and situational crisis has significantly reduced funding for the LCD, affecting our ability to provide necessary resources, staff salaries, and essential services. It's important to highlight that nearly 40% of the LCD's overall expenditures come from the Nursery and Preschool sections. However, since October 2023, many families of hearing children have left the country, leading to a sharp decline in enrollment in these sections. This has created substantial financial challenges for the LCD.

2. Humanitarian Crisis

- **Increased Demand for Services:** As families faced economic hardships, as many of them lost their homes, the need for educational and support services for deaf children have grown, putting additional pressure on the LCD's resources.
- **Displacement Issues:** Families displaced by conflict require special accommodations and support, adding complexity to the LCD's mission. The LCD welcomed 22 displaced persons living at its top floors.

3. Security Concerns

- **Disruptions in services:** Situations occasionally forced the LCD to disrupt daily activities, making it challenging to maintain consistent educational programs.
- **Safety of Staff and Students:** Concerns about safety deterred attendance and affect staff morale, further complicating operations.

Family members and students of the LCD

In our program at the LCD, we learned that four deaf families have lost their homes, and one family has lost two homes. Many families were living in public schools, rented apartments, or with relatives in safer areas.

At the LCD, we have welcomed 22 displaced individuals, mostly family members of Hussein's sister, who have been staying with us from September 23rd until November 28th, 2024. When they were residing with us, they received support from the Lebanese Red Cross and other organizations, providing basic food, hygiene items, clothing, etc. We offered them full accommodation at the top floors of the LCD, electricity, a generator, facilities, and a kitchen, so they were managing well.



During these challenging times, we provided mattresses, household materials, food, and other essentials for displaced Deaf individuals. Some lived on the streets of Beirut, while others have taken refuge in public schools. Our board members helped those living on the streets to make transition into public schools, where they can remain until a more permanent solution was found.

Displaced Deaf People/Families

Like many displaced Lebanese families fleeing from the South of Lebanon and the Southern Suburb of Beirut, Deaf families were facing significant challenges. One family, with two Deaf children who were previously enrolled in our Early Intervention program, has lost both their home in the South of Lebanon and their rented apartment in the Suburb of Beirut. They were living with relatives in a rented apartment in the mountains, but they had encountered various difficulties.

Since September 24, 2024, the LCD, in collaboration with the Lebanese Federation of the Deaf, has been providing support to displaced Deaf families. We have collected essential items—such as mattresses, food, household materials, winter clothing, and hearing aid batteries—from various organizations throughout Lebanon to distribute to those in need across different areas.



Unfortunately, some Deaf individuals were still living in their cars due to a lack of proper accommodation. Many have declined offers to stay in overcrowded public schools, citing concerns about hygiene and safety. Additionally, the loss of employment has made it difficult for families to afford rental housing. We were actively working to assist them in finding suitable accommodations, though this was not an easy task.

Community Contributions

The support provided to displaced Deaf families has come from the generosity of various organizations and individuals:

- **Mattresses** were donated by the Sisters of the Home Mercy Hospital in Roumieh.

- **Household materials** were contributed by a family connected to our Early Intervention Program, which owns a shop in Beirut.
- **Food parcels** were provided by Family Care International, and by friends.
- **Hearing aid aids and batteries** were donated by our friends from Switzerland.
- **Blankets and Clothing** were donated by individuals and friends of the LCD.

The Ceasefire

We were relieved that the ceasefire between the two countries took effect on November 27th. The 22 displaced individuals staying at the LCD have returned to their rented homes in the South, and we have learned that their temporary accommodations were not damaged.

Unfortunately, all of Hussein's family's homes, including his, were completely damaged. Hussein's friends and relatives were deeply saddened by the losses of not only homes but also loved ones. However, Hussein and his family were grateful to be alive and safe.

At the LCD, some children have returned after several months away due to the situation. While the number of children in the nursery, preschool, and early intervention programs has increased, it remains low compared to the previous year. Nevertheless, we considered this a positive development.

In December, Christmas decorations have been put up, bringing joy to both the children and staff. The atmosphere at the LCD is heartwarming, forgetting to what had happened in the country during the previous months.

Early Intervention Program

The report regarding the Early Intervention Program is written by our interventionist, Mrs. Wafa, which is as follows:



The Early Intervention Program (EIP) is dedicated to supporting families of deaf children (primarily aged 0-6) through various services, emphasizing parental and caregiver involvement. The program provides moral support, essential information, rehabilitation sessions, home visits, and support groups to ensure comprehensive care. Additionally, EIP offers consultation sessions led by experienced therapists and early interventionists to assist

and guide families of children and adults with other disabilities or learning difficulties. Donated second-hand hearing aids and batteries are also distributed to EIP children and other deaf individuals to meet ongoing demand.

In 2024, the program served 35 children and their families through habilitation and rehabilitation sessions, group therapy, psychomotor therapy, and remote follow-ups. Six of these children were integrated into our preschool/nursery. Parental participation significantly enhanced the program's effectiveness, and increased referrals for younger EIP children reflect the impact of advocacy and awareness efforts.

Lebanon has endured severe crises over the past four years. The war in the south, which began in October 2023, worsened conditions. On September 24, 2024, the war reached Beirut, prompting the LCD to close intermittently for more than 20 days until the war officially ended on November 27, 2024. Many families were displaced, leading the EIP team to implement online sessions and telepractice to maintain service access. However, these crises significantly impacted the program, particularly in terms of financial support. Despite these difficulties, EIP remained committed to its mission, adapting through remote therapy, volunteer contributions, and resource optimization to ensure continued care for children and families relying on the program.



Beyond LCD families, consultation sessions provide assessments, guidance, and referrals for children with disabilities or learning difficulties. In 2024, 110 consultations were conducted in person or via phone calls, and 95 individuals received second-hand hearing aids. A total of 160 hearing aids were distributed, with follow-up support for fitting. Among the recipients were 45 women, 31 men, and 19 children. Based on need and availability, 65 individuals received two devices, while 30 received one.

EIP has played a crucial role in language and overall development in deaf children, fostering better integration within their families and communities. The program continues to prioritize language development with active family participation. Many families have expressed gratitude for the moral and financial support provided by LCD, including hearing aid donations, especially during the war period.

A displaced family from Beirut to Keserwan (Mount Lebanon) highlighted how online therapy sessions enabled their child to continue receiving essential speech therapy. Another family, displaced from the south, whose 5-year-old daughter has a spectrum disorder, benefited from short-term intervention, with her mother noting significant progress. These stories underscore the program's vital role in ensuring continuity of care during crises.

Despite immense challenges, EIP has remained steadfast in its mission, ensuring continued service delivery for deaf individuals across Lebanon. The implementation of online therapy and telepractice has reinforced its commitment to supporting families under all circumstances.

Selected Story of 2 Deaf Children

Rayan:



At just 1 year and 5 months old, **Rayan** is the youngest child currently enrolled in our Early Intervention Program (EIP) - and she is already leaving a lasting impression on all of us. The youngest of three siblings, with older brothers aged 12 and 15; Rayan was born with Down syndrome and diagnosed with bilateral moderate hearing loss. In April 2024, she was fitted with hearing aids, a crucial step in helping her connect with the world of sound. By May, she had joined our program, and from that moment, we became part of her journey.

From the very first session, Rayan's curiosity and determination shone through. Week by week, we have watched her listening, auditory, and communication skills blossom. She is becoming more aware of her surroundings, responding to sounds with joyful babbles and an eagerness to engage.

Rayan has discovered the power of signs and now uses them to express her needs—a beautiful milestone that allows her to connect with those around her. She understands daily life phrases and imitates sounds, each attempt bringing smiles and encouragement. Every step Rayan takes - no matter how small it may seem to the outside world - is a huge success for her, her family, and for us. Her progress is a reminder that growth happens in the tiniest moments: a gesture, a sound, a shared glance filled with understanding.

We are honored to be part of Rayan’s journey and to witness her unfolding potential. With every session, she teaches us that communication is more than just words - it’s about connection, determination, and the joy of discovery. And for Rayan, this journey is just beginning.

Hussein



Hussein, a **three-year-and-nine-month-old** child, is full of warmth, determination, and an infectious love for learning. He was diagnosed with **Brown-Vialetto Laere syndrome**, a rare neurological condition that affects his muscles and speech, as well as **bilateral profound hearing loss**.

In January 2024, Hussein received **ultra-power hearing aids**, but when the results weren’t sufficient, he underwent **cochlear implant surgery** in June 2024. His family, determined to provide him with every opportunity to thrive, enrolled him in **speech therapy** as early as September 2023, working with two private therapists. However, finding a school that could truly meet his needs remained a challenge.

That's when **The Learning Center for the Deaf (LCD)** became part of Hussein's story. His parents found the perfect fit in **LCD's integrated preschool**, where he flourished—both academically and socially. His joy was evident as he made **meaningful friendships**, engaged in learning, and embraced new experiences.

When the war made transportation difficult, Hussein's parents decided to continue his therapy through EIP at the LCD. What began as a necessary transition soon proved to be a perfect fit for Hussein's needs. The tailored approach and the **personal connection** Hussein built with our specialist, **Wafa**, led to remarkable improvements. Hussein showed progress across all areas—**listening, communication, and interaction** - and he grew more confident each day.

Through the program, Hussein's family has also benefited from **home-based targets** and **parent training**, which allowed them to support his development in a more integrated way. Despite facing challenges, such as the **destruction of their home** during the war and **financial difficulties**, Hussein's family has remained committed to his progress. LCD and the EIP team have been there every step of the way, offering guidance and support, ensuring that Hussein's growth continues without interruption.

We are incredibly proud of the progress Hussein has made and are grateful to be part of his journey - and we look forward to all the milestones yet to come.

Support Group for Parents



Several Support Group Sessions were held for parents of deaf children, guided by the dedicated board member of the LCD and volunteer psychologist, Charlotte El Khalil, with the presence of Wafa. The sessions provided a supportive space for parents to share experiences, receive guidance, and gain valuable insights into supporting their children's development and well-being.

Challenges undertaken by the LCD

Nearly all of the LCD's initiatives focus on providing essential services that are either lacking, needed for improvement, or too risky to undertake due to the challenges they present. These initiatives align with the rights of Deaf individuals to a decent life, respect for their identity, and equal opportunities at all levels. The emphasis is on ensuring access to communication, information, and quality education, starting with early intervention.



The capacity development of the Nursery and Preschool sections, which are under the Early Intervention Program, helps maintain these programs as high-quality, inclusive educational settings that attract families of hearing children. This, in turn, supports the LCD's financial sustainability through auto-generated income.

Achieving these goals comes with significant challenges, whether due to resistance to change or because the system is not yet ready for new approaches. Therefore, the LCD requires every

possible form of support to take the necessary steps to improve the lives of Deaf children, their families, and Deaf adults.

The LCD has built a level of expertise that allows it to thoroughly assess the real challenges facing the Deaf community and provide high-quality services and advocacy. While the direct impact of its services may be limited in number, the broader effect of its work—driving continuous change—is felt on a national level, and even beyond.

This expertise is grounded in several key factors, including the fact that Hussein, who is Deaf, and his team, live closely within the Deaf community. They are experienced educators and have long been involved with the National Council for People with Disabilities as well as with Disabled People's Organizations (DPOs) in advocacy work.

Jip & Janneke Nursery and Preschool

In the year 2024, we had around 19 children (on average) in the Jip & Janneke Integrated Nursery and Preschool; 6 of the children had some hearing loss.

As explained above, the number of children in the Nursery Section has dramatically reduced due to the crises, which forced many families, especially foreigners and those who have a second passport, to leave Lebanon. During that year, we had only 7 children in the Nursery, and many children in the Preschool section have left the country.



In the Nursery, children grow and develop in various areas—academically, socially, and emotionally. It's heartwarming to witness their progress. One of the most noticeable improvements is in their language and communication skills. These children can now express their emotions and thoughts and share the new knowledge they gain with their friends, teachers, and family.

The children in the Jip and Janneke Integrated Nursery and Preschool bring immense joy to the LCD. Having them around is truly a blessing. Despite the ongoing economic crisis, these children continue to attend the LCD and benefit from our services. Parents have expressed their happiness and satisfaction with these programs.

A Message by a Parent

One parent of our nursery children wrote a heartwarming and encouraging message on the LCD's Facebook page. The message was truly thoughtful and appreciated. It reads as follows:

Our son, Rani, spent a year at the Jip & Janneke Nursery!

This Preschool was recommended by many of our friends for the love & support they provide to the kids, for their promotion of independence, inclusion and acceptance of individuals with differences.

Our year at the Jip & Janneke was wonderful. Rani found a nurturing environment where he learned so many hands on skills. The environment was very healthy (diet (one of the few nurseries) and physical environment) that we loved going there every morning as much as Rani did. Hats off to the impressive team for their dedication and love.

Hearing Aids and Batteries



For many years, the LCD has been dedicated to providing hearing aids and batteries to those in need across Lebanon. This important initiative has been made possible through the generous support of our friends in Switzerland, particularly the board members of the **“Friends of the LCD-Switzerland (FK-LCD).”** Their efforts in collecting and sending high-quality, second-hand hearing aids have been invaluable, allowing us to distribute them at no cost to individuals with hearing loss, including refugees, who are unable to afford such vital devices.



Throughout the past year, we were amazed by the continued generosity of our Swiss friends, who have sent us hundreds of hearing aids. Their commitment extends beyond simply providing the devices – whenever we have needed specific items for testing or other purposes, they have gone above and beyond to locate the necessary equipment.

Gender	Number of Beneficiaries	Hearing Aids Quantity
Children	19	38
Women	45	70
Men	31	52
Total	95	160

In total, 95 individuals received hearing aids during this period, including 11 refugees, who were among the most in need.

We are deeply thankful for the unwavering support of our Swiss partners. Their understanding of the urgent need for hearing aids, and their prompt action to raise awareness and collect these vital resources, has made a significant difference in the lives of many in Lebanon. We are truly grateful for their dedication to helping those who would otherwise go without.

High School Program

The High School Program at the LCD is designed to prepare Deaf students for the official examination set by the Lebanese Ministry of Education after completing three years of study at the LCD. Upon passing this examination, students receive a high school diploma (Baccalaureate Part 2) from the Ministry, which opens the doors for them to pursue higher education at the university level, allowing them to follow their dreams and study their chosen fields, whether in Lebanon or abroad.

In September, we had hoped to open a new class for the 10th grade, the first year of the high school program. However, this did not come to fruition as only one school for the Deaf in Lebanon administered the Official 9th-grade examination. The Deaf students who passed the exams chose to enroll in technical or vocational programs, which is understandable given the current economic challenges in Lebanon.

Despite this setback, we were pleased to admit one student who expressed a strong desire to continue his education. We welcomed him into our afternoon sessions, aimed at improving his academic subjects. These sessions are not only open to Deaf students but also to hearing

students who wish to enhance their knowledge in specific subjects and prepare for the 10th grade.



During 2024, up until July, we had five high school students in their third and final year of the high school program. These students made significant progress in various subjects, overcoming educational challenges they had faced in previous years. We were proud to report that they successfully passed the official examination set by the Lebanese Ministry of Education in July. To celebrate their accomplishments, we held a special graduation ceremony to honor their hard work and achievements.

We remain committed to supporting our students as they continue to pursue their educational goals, and we look forward to what the future holds for these bright young men and women.

Orientation Days for High School Students



The high school students had the opportunity to visit several universities in Lebanon for orientation purposes, allowing them to gain an inside view of the university system. This experience provided valuable educational insights, helping the students make more informed decisions about their future academic paths.



On one visit, we were pleased that one of the LCD's Board Members, Dr. Assadour, the Dean of Mechanical Engineering, at the Lebanese International University (LIU), was present to guide the students during the visit. He kindly showed them some of the classrooms and labs. The students also had the opportunity to sit in on a class session in the computer lab and engage in discussions with university students. Following this, Dr. Assadour, along with a colleague from the admissions office, provided valuable information about the university's programs, costs, and other details. Some of the high school students expressed interest in enrolling at the university after this informative experience.

Graduation Ceremony

We are thrilled to share the joyous occasion of the graduation ceremony for five of our high school Deaf students who completed their Baccalaureate level with distinction. It was a beautiful day, filled with fellowship and an uplifting atmosphere that reflected the hard work and dedication of these remarkable students.

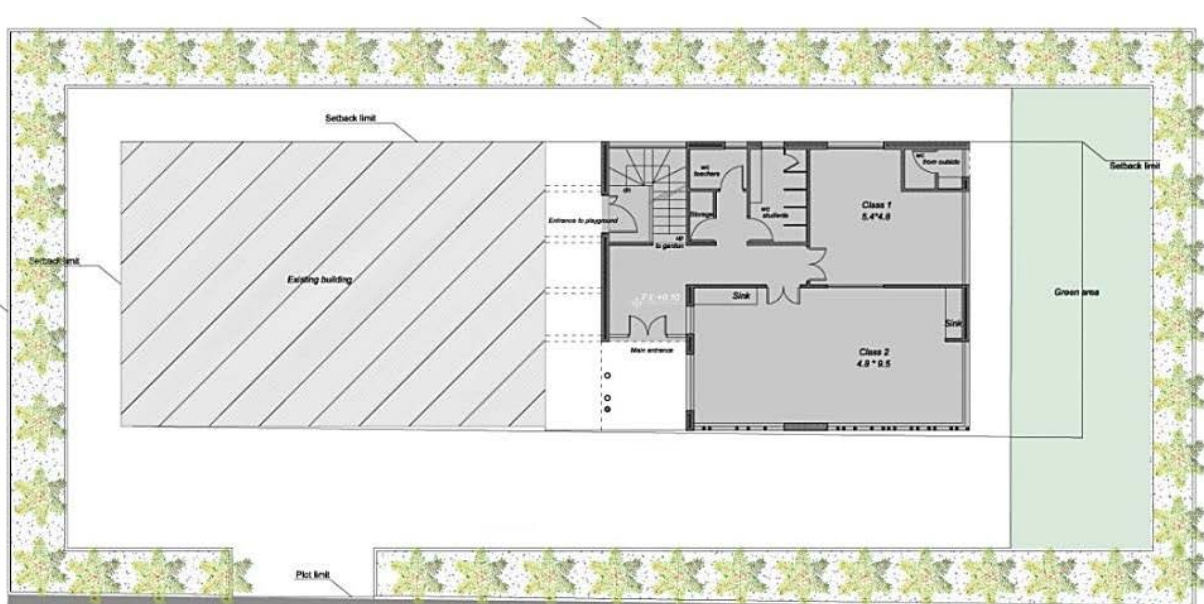


The ceremony was a heartfelt celebration of their achievements, and we couldn't be prouder of their success. As they move forward to pursue their dreams at the university level, we wish them nothing but the best. May God continue to bless them on their journey toward higher education and future accomplishments.

We are confident that these graduates will go on to make a positive impact in the world, and we are honored to have been a part of their educational journey.

Project: Construction of Nursery Annex Update

During the summer, the LCD had planned to begin the construction of a new annex to the existing nursery site, aimed at accommodating more children. This project was generously sponsored by our long-time partner, Wilde Ganzen (WG) of the Netherlands, in collaboration with the supporting organization AMT-NL.



After several months of effort to secure the necessary construction permit from the Lebanese authorities, we were thrilled to receive approval in June, allowing us to move forward with the construction of the new facility. However, due to the ongoing crises, we were unable to begin the work as initially planned.



in time to begin the construction, as the scholastic year had already commenced.

Both WG and AMT-NL, in light of the situation, expressed concerns about transferring funds before construction could start. They understandably preferred to wait until peace was restored, at which point we could proceed with the construction. Months passed, and in November 2024, the two countries signed a peace treaty. Despite this positive development, it was not feasible for us to request the funds

In light of these challenges, we have made the decision to postpone the construction work until the summer of 2025, hoping that by then, the situation will permit us to move forward with this much-needed expansion.

We remain hopeful and committed to this project, as it will play a vital role in serving more children in need, and we will continue to monitor the situation closely, trusting that the right time for construction will come soon.

Intensive Trainings

In 2024, the LCD hosted several intensive training sessions for various centers, professionals, and other organizations. Below, we highlight some of the key events that took place.

Social Protection Policy: In January 2024, a final Focus Group meeting was held in relation to the Social Protection Policy for the Deaf in Lebanon, focusing on advocacy and the rights of persons with disabilities. The session gathered 14 deaf participants of various ages from different regions of Lebanon.



Mr. Amer Makarem, with the interpretation provided by Ms. Maria Chalhoub, delivered a comprehensive presentation about the project and its objectives, with a particular emphasis on identifying support services for independent living and participation.

During the meeting, the participants identified three key services as priorities for their needs. They then filled out templates for each service through discussions in working groups.

Needs of the Deaf: In January 2024, a workshop was held at our center for deaf individuals aged 18 to 28. The theme of the workshop focused on discussing the needs and services for the deaf community, with participants completing questionnaires to provide insights. The session was led by Mr. Amer Makarem, President of the Youth Association of the Blind, and supported by Miss Maria Chalhoub, a sign language interpreter.



Media and Sign Language: Hussein delivered a presentation titled “Media and Sign Language: How to Deliver Information to Deaf and Hard of Hearing Persons” to two separate groups, including journalists, university trainers, students, and others, on different days. The presentation focused on the importance of using sign language interpreters and captioning to ensure media content is accessible to deaf and hard-of-hearing individuals. The workshop aimed to raise awareness and advocate for the inclusion of people with disabilities in the media. The goal was to empower media organizations and journalists to create inclusive content that uses appropriate language and disability terminology, in line with the social model of disability.



Training for Teachers: The on-the-job training session was conducted by Wafa, an Early Interventionist at the LCD, for nursery and preschool teachers and staff members. The session focused on understanding hearing loss and highlighted the vital role of teachers in supporting deaf children. Emphasis was placed on the importance of collaboration between teachers, early interventionists, and parents to optimize outcomes for deaf children. Wafa also

shared valuable insights into setting targets, using effective techniques, and implementing strategies to enhance language development and create a supportive hearing environment within the classroom.



Workshop, Seminars, etc.

Throughout the year, the LCD participated in several workshops, seminars, and events, either in person or via Zoom. While not all events can be listed, here are some notable meetings that took place:

1. Awareness guidelines for integrating the Deaf into the work environment
2. Accessibility and Inclusion of People with Disabilities in Lebanese Cultural, Heritage and Natural Sites
3. Towards Inclusive Social Protection – Lebanon
4. Workshop at the Syndicate of Nursery Owners
5. Tourism Accessibility for the Deaf
6. Among others

Workshop for the Deaf

The LCD, in collaboration with the Lebanese Federation of the Deaf, conducted training workshops specifically for adult deaf individuals to help them develop skills in advocacy and campaigns relevant to the deaf community. A total of 25 deaf participants, from various ages and backgrounds, were selected for the program. Over the course of six workshops, they focused on topics such as the Social Protection Policy in Lebanon, advocacy, and the rights of persons with disabilities. These workshops aimed to empower the participants to engage in effective advocacy and raise awareness on issues affecting the deaf community.



Wafa attended a Congress in UAE

The LCD's Early Interventionist, Wafa, had the opportunity to attend the 13th Emirates Otorhinolaryngology Audiology Swallowing and Communication Disorders Congress (EROC 2024) in Dubai from January 17-19. The congress brought together leading experts from various subspecialties and countries, providing updates in ORL (Otorhinolaryngology) Head and Neck. Attendees included ENT doctors, audiologists, speech therapists, and professionals from a variety of fields. The event featured expertly curated programs on Rhinology, Otology and Hearing, Audiology, Phoniatrics, and Laryngology, as well as a large Exhibition Space displaying innovative tools and technologies in the field.



First Aid Workshop

Nursery and preschool teachers, along with staff members, took part in a full-day first aid workshop at the LCD, organized by the Lebanese Red Cross. The training covered CPR

techniques for both young children and adults, ensuring that the staff were well-equipped with the essential skills needed to respond effectively to emergency situations.



Marathon

A marathon and a Fun 5km Run were unfortunately canceled due to the prevailing situation. This was particularly disappointing as Hussein had been training for many months in preparation to participate in the full marathon. Additionally, the LCD was among several associations set to receive financial support from the Beirut Marathon Association. When participants registered under the LCD, a significant portion of the funds would have gone towards supporting the LCD's work.

Despite the cancellation, Hussein took matters into his own hands and completed two full marathon runs, unsupported, in November and December.

Interview on a Radio

On the occasion of International Sign Language Day, an interview was conducted and broadcasted on Radio Lebanon in Beirut, Lebanon.

The discussion covered several topics related to the situation of the deaf in Lebanon, factors contributing to the success of the deaf community, and raising awareness on how to interact with deaf individuals by providing proper education and job opportunities.

Hussein also spoke about his experience in obtaining a PhD in education, the reasons behind it, and the motivation that encouraged other deaf individuals to pursue higher education by establishing the Learning Center for the Deaf and the Lebanese Federation of the Deaf.

He also addressed the status of sign languages in Lebanon and ways to develop a Lebanese Sign Language, in order to train interpreters and teachers, among others, for better communication with the deaf community.

Finally, Hussein talked about the OMT Beirut Marathon, which will take place on November 10, 2024, and encouraged people to register for the 5-kilometer race to raise funds (5k Fund Run). He invited participants to select the Learning Center for the Deaf, among 20 other NGOs, to run for the cause and support work for the deaf community.

Ms. Christine, the office manager, also spoke about the sign language lessons, programs, and services provided by the Learning Center for the Deaf, as well as the registration for the OMT Beirut Marathon (5k Fund Run).

Sign Language Courses



At the LCD, courses were offered regularly, attracting participants from a wide range of backgrounds, professions, and nationalities. Among the participants were medical doctors, soldiers, social workers, teachers, and others, including individuals simply interested in learning the language of the deaf.

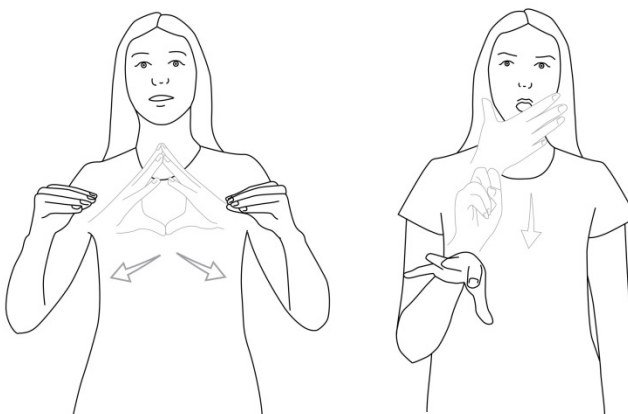
The main purpose of these courses was to enable participants to effectively communicate with deaf individuals, fostering greater inclusion and understanding within various professional and social settings.

Sign Language in the Nursery/Preschool

Sign Language sessions were also offered to the children in the preschool section, with Malak and Najah, both deaf instructors, leading the lessons. Their talents in teaching sign language to young children made the sessions both engaging and enjoyable. The children found the lessons to be great fun and were deeply influenced by the experience of communicating with deaf adults. Inspired by the positive impact on their children, some parents expressed interest in registering for the course themselves.

Sign Language Development Work

The LCD is proud to have a wonderful team of deaf members, including Malak, Saeed, and Elie. Malak and Saeed focus on collecting concepts in Sign Language, producing videos, and documenting them for future use. Elie works on converting these videos into diagrams. We are hopeful that within a year or two, these Sign Language concepts will be integrated into an app and also compiled into a book, making them accessible to a wider audience.



Sign Language on the Local TV

Finally, a news in Sign Language for the deaf was launched after a long period of time lobbying and requesting from the Lebanese Government to provide this service.

We were so pleased a news program in Sign Language, translated by deaf individuals who are LCD's staff and a board member, was broadcast on the national television station, Télé Liban, during the evening prime time (7:30-8:00 PM).



This achievement was made possible through the efforts of Lebanese Minister of Information, Mr. Ziad Makari, with support from the Al-Maqassed Charity Association in Beirut. We hope that other national TV stations will also consider integrating sign language interpretation into their main news programs.

Teachers' Day

Celebrating Teachers' Day was a wonderful gathering, and we had the opportunity to enjoy a lot of fun. Thank God for this special event. We pray that God blesses each teacher and mentor at the LCD for their hard work and dedication.



Annual School Trip

As is tradition, the LCD organizes a yearly school trip for staff members and students to special places in Lebanon. In May 2023, we visited the ruins of Baalbek, located in the Bekaa Valley—approximately two hours away by car—and also toured a winery in Zahleh to learn about wine production. This trip was made possible thanks to the generous support of our Swiss friends, one of whom is the President of the “Friends of the LCD-Lebanon,” along with his son and a friend who joined us on that day.

However, in 2024, for the first time, the LCD was unable to organize the school trip due to the ongoing situation. Our Swiss friends were distressed as they had planned to join the trip and support the expenses. We are hopeful that in May 2025, we will be able to make the school trip possible once again.

Advocacy Work

During the year 2024, just as in previous years, the LCD continued its collaboration with other Disabled Persons Organizations (DPOs) in Lebanon, working together on issues related to people with disabilities (PwD), particularly on human rights matters. We have been actively advocating with the Lebanese Government to ensure that minimum rights for PwD are provided. Our partnership with DPOs has been essential, as it has strengthened the work of the LCD in making meaningful progress.

The LCD, in collaboration with the Lebanese Federation of the Deaf (LFD), has maintained its efforts through the advocacy program.

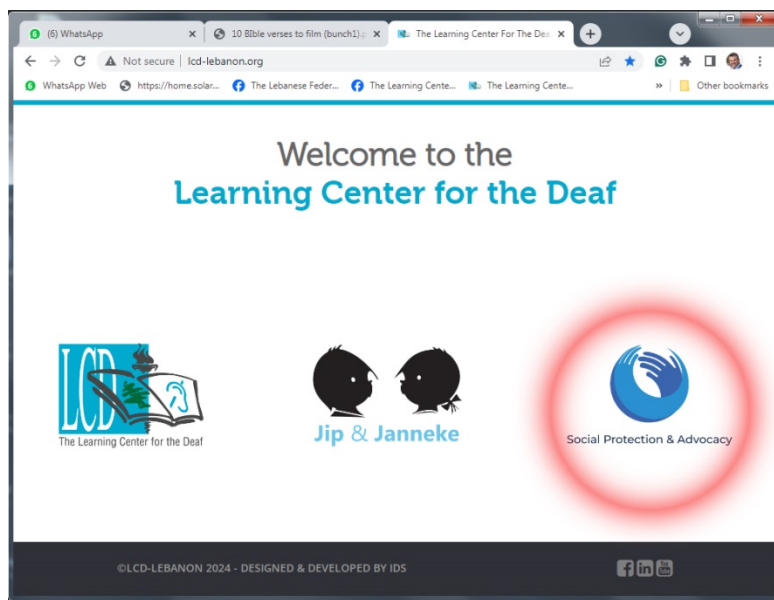
Throughout the year, several workshops, awareness seminars, and meetings took place, with key stakeholders from various government departments in attendance. These sessions focused on the rights of Persons with Disabilities, including deaf individuals. Some were organized solely by the LCD, while others were held in partnership with national NGOs and DPOs.

In addition to these activities, the LCD and LFD have continued to lobby government stakeholders to ensure the provision of minimum rights for the Deaf community.

Launching a Platform

We are pleased to announce the creation and launch of the "Social Protection and Advocacy" platform on the LCD's website. The purpose of this platform is to help deaf individuals in Lebanon better understand issues related to human rights, particularly Social Protection for Persons with Disabilities. This project was developed in close collaboration with the Lebanese Federation of the Deaf.

On this page, videos featuring sign language and subtitles are available, explaining important topics such as the National Disability Allowance, Social Protection, Disability Cards, and more.



For more information, please visit the site: www.lcd-lebanon.org and select the "Social Protection and Advocacy" icon.

LCD's Project Works

During 2024, the LCD undertook several small project works, primarily focused on renovation and improvements. Some of the key initiatives included:

1. **Kitchen:** Flooring, Counter, and the Sink
2. **Children's Toilets:** Infrastructure upgrades, including new tiling, toilet seats, and the installation of partitions.
3. **Nursery:** Painting
4. **Media Room:** Painting
5. **Outdoor Floor** Tiles

Please see the photos below showing before and after the project works.

Kitchen:



Children's Toilet:



Nursery:



Media Room:



Outdoor
Flooring:



Preparation Work before the School Starts

Some of the furniture in the classroom, such as children's tables and chairs, as well as playground facilities, needed renovation. We are pleased to share that several staff members took on this project during the summer, working hard to restore the furniture, making it look new and fresh. This ensured that everything would be ready for the children when they returned after the summer break.



A Marketing and Employment Exhibition

The Learning Center for the Deaf (LCD) and the Lebanese Federation of the Deaf (LFD) were honored to participate in and organize the first marketing and employment exhibition in the Bekaa, which was organized by the International Translators Union. The event took place on Friday, June 7th, in the courtyard of the Federation Center in Tamnineh El-Tahta.



Our Faithful Partners and Sponsors

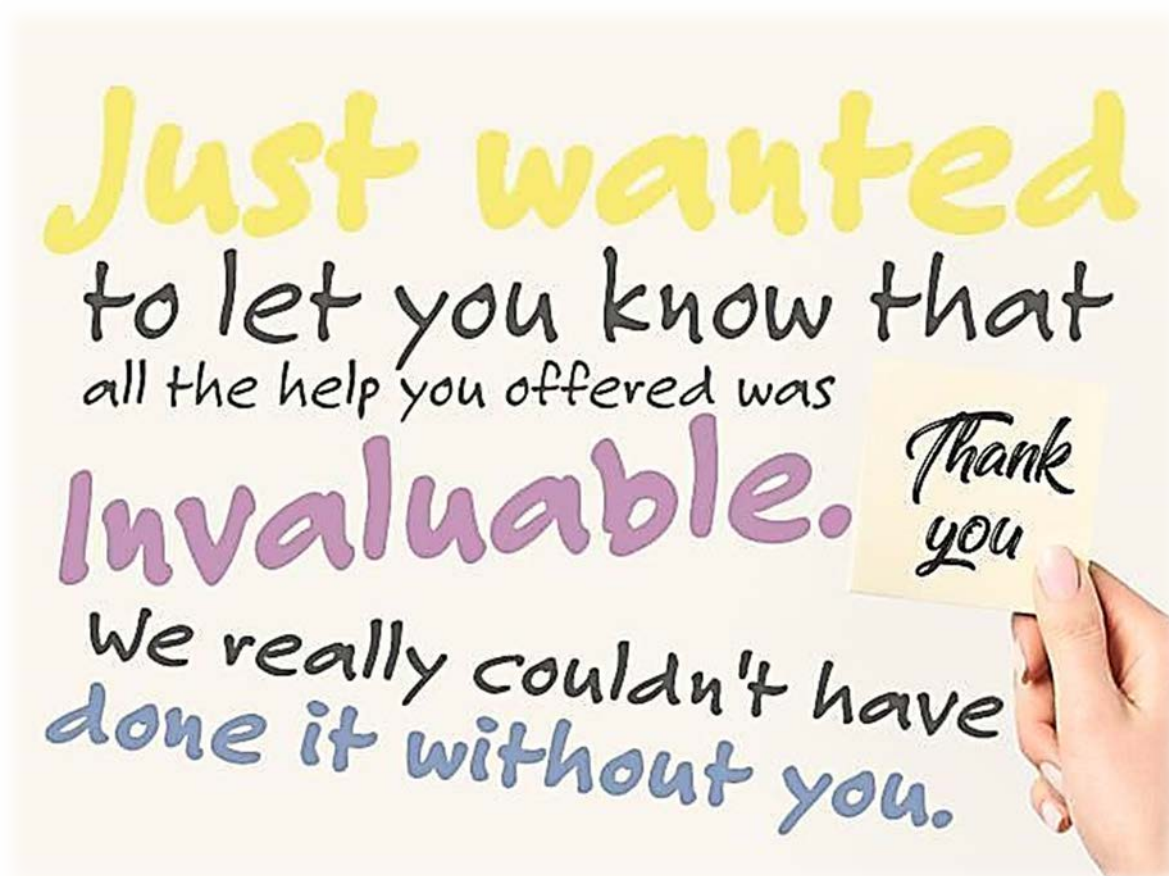
As always, the LCD is deeply grateful for the faithfulness and support of various organizations, associations, individuals, and friends, both locally and internationally. Without their generous contributions, the LCD would not be able to continue its important work.

To name just a few, here is a list of some of our steadfast supporters:

1. **Embrace the Middle East—UK:** Embrace has been one of our primary partners and has supported our services and programs for many years. They cover a substantial portion of the salaries for many of our staff members. Their support goes beyond just financial assistance; they maintain a close and active interest in our work, always offering encouragement and a true sense of partnership. We deeply appreciate their ongoing support, particularly their prayers for us, and their willingness to listen and offer help whenever we face specific challenges.
2. **Friends of the LCD-Lebanon, Switzerland:** The LCD has had a long and strong relationship with the Swiss foundation “Friends of the LCD-Lebanon (FK-LCD)” on many levels. This foundation was one of the first to support the LCD when it was established and has continued to help us meet various needs, often contributing substantial amounts of financial support. Whenever we require specific items, our Swiss friends go above and beyond to find what we need. They are truly a friend in need, not only supporting us financially but also by sending hearing aids, batteries, and other essential items. We are immensely grateful for their continued support.
3. **AMT-NL:** AMT-NL is a small foundation based in the Netherlands that provides support for specific projects when needed. They were the first foundation to support the LCD during its initiation phase. Their ongoing help has been invaluable to us, and we are thankful for their commitment to our cause.
4. **Wilde Ganzen-NL:** Wilde Ganzen (WG) has been a vital supporter of the LCD, assisting with various projects. Their most significant contribution was the purchase and expansion of the LCD’s premises. They have also supported the renovation of our building on two separate occasions. During the challenges of COVID-19 and the Beirut port explosion, WG provided financial support to help ensure the continuity of our work. In 2022, WG approved our proposal for the construction of a new facility for the Integrated Nursery, complete with updated playground facilities. We hope to begin this project in the summer of 2025.
5. **Johanne van Dijk:** Johanne, who previously worked at Wilde Ganzen, continues to support our work in many ways. She has a great heart and feels a deep connection to the LCD. Along with our dear Dutch friends, **Frits and Marjolijn van der Hoeven**, Johanne has worked tirelessly to help realize the construction project for the Integrated Nursery, with the support of **Hans Wareman from AMT-NL**. We are incredibly grateful for their perseverance and dedication.
6. **Hans Silberschmidt:** Hans is the treasurer for the “Friends of the LCD-Lebanon” foundation and has been in constant communication with the LCD, whether by email, WhatsApp, or phone. He regularly shares his ideas and support for our work, and both Hussein and Nadine consider him a very close friend. Along with a good friend, **Rainer Nobs, the president of FK-LCD**, Hans and Rainer hold the LCD in their hearts and have been strong and reliable supporters.
7. **Josephine Marriage:** Josephine is an English audiologist who has consistently supported the LCD both financially and technically. In the past, she visited annually to conduct training and workshops for the LCD staff and specialists. Josephine is a

person with a great heart, and her contributions have had a lasting impact on our work.

8. **Herbert Klein:** Herbert is a deaf man from England who continually supports the LCD through his prayers and financial contributions. His unwavering support is greatly appreciated.
9. **Sr. Doris Kellerhals** of the Kommunitat Diakonissenhaus Riehen, Switzerland, who continued to pray for us and made a generous donation to the LCD during the crises.
10. **Mrs. Pam White**, a long friend of Hussein, continued to support us within her capacity. We are very grateful for this.
11. **The German Speaking Congregation in Beirut:** We are grateful to the German Speaking Church in Beirut for their generous support of our stationery costs.
12. **Many friends (Marnix, Achim, Gabriele, Paul, and Gregory)** were great supporters, especially during the crises.
13. **Other Individuals and Friends:** We would also like to acknowledge the many other individuals and friends who continue to support the LCD within their capacity. We are deeply grateful for their kindness and contributions, which help us continue our work.



Conclusion

As we reflect on the past year, we are deeply blessed and thankful for the many organizations, individuals, and friends who have believed in the mission of the LCD to serve Deaf children and their families. Their unwavering support has been a constant source of strength, and we are truly grateful for their dedication.

It is clear to us that God has placed the LCD in the hearts of those who support us, knowing the challenges we faced during the year. The obstacles were significant, but with His guidance, He has always responded at the right time, helping the LCD stand strong and continue providing the best possible service to those in need.

We are deeply thankful for His provision and for each person and organization who has walked alongside us. Your generosity and faith in our work have made all the difference.

May God bless you all abundantly!



The Learning Center for the Deaf

Baabda – Lebanon

Photos during 2024



Cleaning time in the Nursery



At the Playground



Displaced children living at the LCD, during the crises



High School Students, during their last day



One of the Project Works



A deaf teacher working with a deaf child

The Learning Center for the Deaf

Baabda – Lebanon

Photos during 2024



During a radio interview



Occupational Therapy Session



Training in the Audiology Room



A welcome home sign



Chess board donated by a Swiss friend



Activity in the garden

The Learning Center for the Deaf

Baabda – Lebanon

Photos during 2024



In the garden



With some faithful staff



Explosion was seen from the LCD's top floor



Occupational Therapy Activity



Please visit us at the www.lcd-lebanon.org, for detailed information about our services and activities.

Thank you for your continuous prayers and support !!

God bless you.