



Annual Report 2022



A good start in life for the Deaf, for a better future

Prepared by Dr. Hussein Ismail, Director



The Learning Center for the Deaf (LCD)
Baabda – Lebanon

Annual Report 2022

Prepared by Hussein Ismail, Ed.D.
Director



Mission Statement

The Learning Center for the Deaf (LCD) is a representative organization of persons with disabilities (OPD), focusing on issues related to the Deaf, where the Deaf constitute a majority of the Board and the General Assembly. It offers services in parallel to advocacy work.

It is located in Baabda, which provides essential services for the Deaf, which were not available in the country before, in order to complement existing programs and services, and thus provide better opportunities for the Deaf and their family members.

The main activities of the LCD is educational and empowerment. The essential programs are the Early Intervention Program (supporting families members of deaf children), Educational Activities for the Deaf (learning Sign Language for any interested participants), Integrated Nursery and Preschool (deaf and hearing children together), High School Program (to prepare deaf students for universities), among others.

Motto of the LCD

“Do for others as you would like them to do for you”

Matthew 7:12

The Annual Report 2022

Contents

1. The Mission Statement of the LCD / Purpose

2. The Programs Offered at the LCD

3. Basic Data about the LCD

4. Members of the LCD (2022)

- Board of Administration
- Staff List
- Volunteers

5. Statistical Data of the Number of the Beneficiaries

6. News & Activities of the LCD 2022

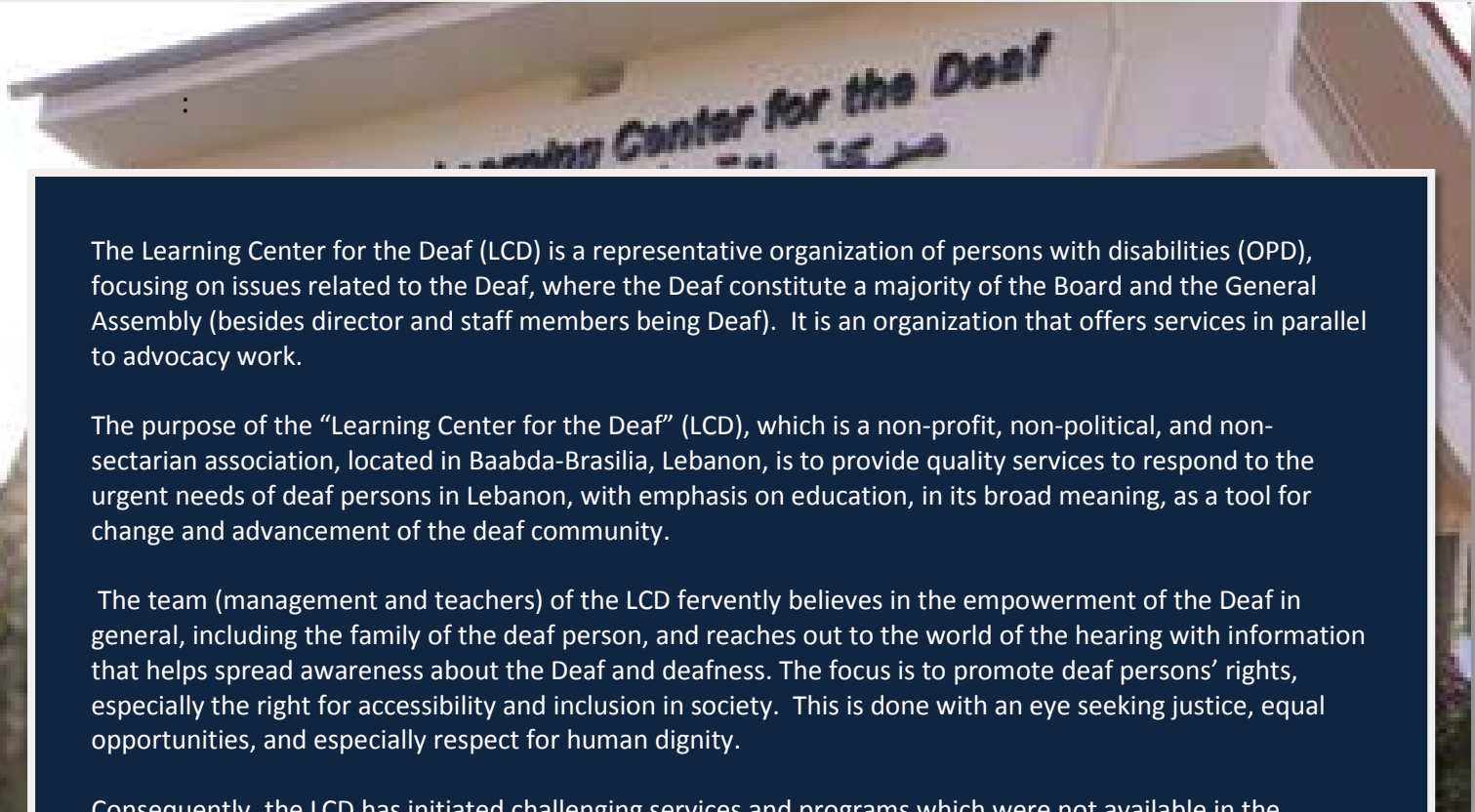
- i. Introduction
- ii. General Situation of Lebanon Affecting the LCD
- iii. The Impact of the Russia-Ukraine War on Lebanon
- iv. Early Intervention Program
- v. Elena and Naya
- vi. Jip & Janneke Nursery and Preschool
- vii. Hearing Aids and Batteries
- viii. Graduation Ceremony 2022, Celine Ajami
- ix. PV Solar System
- x. Montessori Material
- xi. Marathon
- xii. 3 Days of Workshop
- xiii. Rocky (our dog)
- xiv. The Story of our Turtle “Jip”
- xv. Sign Language Courses
- xvi. Awareness Workshops
- xvii. Annual School Trip to the Cedars
- xviii. Macramé Plant Hanger
- xix. Our Faithful Partners and Sponsors
- xx. Advocacy Work
- xxi. Collaboration of the LCD with other Organizations

7. Master Account 2022 (prepared by the certified auditor)

- Income / Expenditures
- Balance Sheet
- Financial Summary Sheet with the Pie Figures

8. Photos - Activities

1. The Mission Statement of the LCD



The Learning Center for the Deaf (LCD) is a representative organization of persons with disabilities (OPD), focusing on issues related to the Deaf, where the Deaf constitute a majority of the Board and the General Assembly (besides director and staff members being Deaf). It is an organization that offers services in parallel to advocacy work.

The purpose of the “Learning Center for the Deaf” (LCD), which is a non-profit, non-political, and non-sectarian association, located in Baabda-Brasilia, Lebanon, is to provide quality services to respond to the urgent needs of deaf persons in Lebanon, with emphasis on education, in its broad meaning, as a tool for change and advancement of the deaf community.

The team (management and teachers) of the LCD fervently believes in the empowerment of the Deaf in general, including the family of the deaf person, and reaches out to the world of the hearing with information that helps spread awareness about the Deaf and deafness. The focus is to promote deaf persons’ rights, especially the right for accessibility and inclusion in society. This is done with an eye seeking justice, equal opportunities, and especially respect for human dignity.

Consequently, the LCD has initiated challenging services and programs which were not available in the country before, in order to complement existing programs and services, and thus provide better opportunities for the Deaf and their family members, whether directly or indirectly. One of the most recent pursuits focuses on the provision of Sign Language interpretation, among others.

All LCD services are meant to create change. Equally, the LCD undertakes many important right-based initiatives, by means of seeking change at the level of legislation and policies; often in partnership with other OPDs.

These services and initiatives were added to the two major and unique programs which were consecutively initiated by the LCD in 2001 and 2003, being the family-based Early Intervention Program and the High School Program.

The High School aims successfully at providing deaf young people the choice of passing the official Baccalaureate (High School) exams and heading to University, like their hearing peers.

The Early Intervention Program is a rich comprehensive program prior to school-age (0-3yrs). It is a stepping stone that empowers the family and provides them tools to surround the child with a rich environment, supportive to his/her general healthy development and well-being, with a great emphasis on communication and language. This stepping stone preemptively determines the quality of the future life of many deaf children.

For the further details of the LCD’s programs and activities, please go to the website page www.lcd-lebanon.org

And for the continuous updated information, please visit to our Facebook page: www.facebook.com/Learning.Center.Deaf.Lebanon

2. *The Programs Offered at the LCD*

To respond the needs of the Deaf, there are programs offered at the LCD, which are incorporating as follows:

1. *The Early Intervention Program (birth to six years)*, which assists families of deaf children from babyhood, to prevent delay in development and mainly language, and especially to restore the relationship between the child and parents, as well as to empower the family to provide the child a healthy, nurturing and loving environment.

Other components of the Early Intervention Program are incorporated as follows:

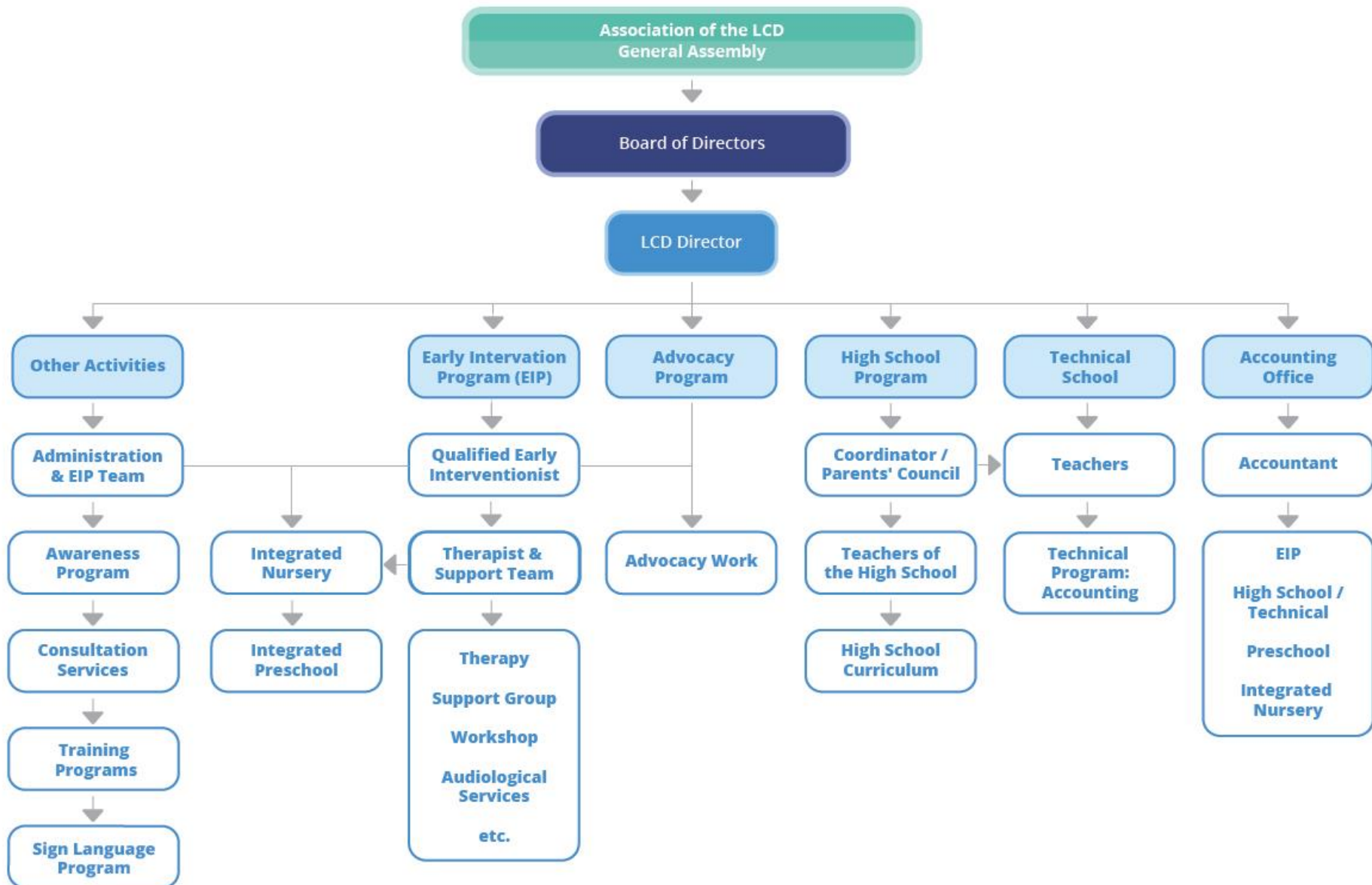
- a. the **Support Group** for parents of deaf children
 - b. the **Course** related to deafness for parents of deaf children
 - c. the **Integrated Nursery** for deaf and hearing children
 - d. the **Resource Room** for parents, students, and professionals
 - e. the **John Tracy Clinic sequential lessons** for parents of deaf children
2. *The High School Education for the Deaf*, which provides the only secondary program in Lebanon, and allows the deaf to have the same right to enter University of their choice, thus promoting the image of the Deaf.
 3. *The Preschool Section (3 to six years)*, which is a regular school setting from KG 1 till KG 3, in preparation to enter the first grade level. This program that has been initiated beginning of October 2017 incorporate for deaf and hearing children.
 4. *Educational Activities for the Deaf*, which designs to promote adult deaf people to learn and improve specific subject matters, such as English language and computer literacy, as well as socialization and a chance to empower the deaf. Also, Sign Language courses for all interested concerned are provided in this program.
 5. *Technical School for the Deaf (New Program)*, which provides technical education such as accounting, computer sciences (graphic designs, AutoCAD, Architecture, etc.) allowing the deaf to have a choice other than academic education. This program lasts for 3 years and leading for Baccalaureate Technique issued by the Lebanese Ministry of Education.
 6. *Advocacy*, which involves in pursuing with the stakeholders to provide the minimum rights of Deaf persons across different domains.
 7. *Awareness programs about deafness and deaf people*, which has as an objective to promote the image of deaf people incorporates activities through media, brochures, and books. Activities in regular nursery settings as well as activities in school and university settings (experiment, telling a story interacting with a deaf puppet and introducing a deaf adult teaching some signs) are provided.
 8. *Consultation*, which provides consultations and advice for families of deaf children, as well as to deaf adults.
 9. *Sign Language Courses*, which provide courses for teachers of the deaf, specialists, students of the universities, interested persons, among others, mainly for communication access for deaf persons.



3. The Basic Data about the LCD

Name	The Learning Center for the Deaf (LCD)
Date established	January 2002
Legal status	<ol style="list-style-type: none"> 1. Charity Registration Number: AD 89, established 2002 with the Lebanese Government 2. Presidential Decree No.: 15798, established 2005 3. License # 2/294, 2022 (the Integrated Nursery)
Visiting address	Sacre Coeur Hospital Crossing, Presidential Palace Road, Near Evangelical Church, Brasilia – Baabda
Contact person	Hussein Ismail, Ed.D. Director
Telephone numbers	00961-5-954584 / 00961-3-700584
Fax number	00961-5-954584
E-mail address	lcd@lcd-lebanon.org
Website	www.lcd-lebanon.org
Facebook	www.facebook.com/Learning.Center.Deaf.Lebanon
Type of organization	The LCD is a non-profit Charitable Service Organization, non-secretarian, and non-governmental association established to promote, facilitate, and empower Deaf men and women through education throughout Lebanon
LCD's Motto	Based on the Lord Jesus's essential statement: <i>"Do for others what you would like them to do for you"</i> . Matthew 7:12
Main areas of activity	Education, Rehabilitation, Consultations, and Advocacy

4. The Organization Chart of the Learning Center for the Deaf (LCD)





5. The Structure of the Learning Center for the Deaf (2022)

Board of Administration	
Chairman of the Board	Ms. Caroline Haykal (deaf)
Treasurer	Ms. Najah El Hamad (deaf)
Secretary	Dr. Hussein Ismail (deaf)
Accountant	Dr. Raed Mohsen
Members of the Board	Mrs. Charlotte Khalil Mr. Habib Fawaz (deaf) Dr. Assadour Khanjian

Staff List	
1. Director / Instructor	Dr. Hussein Ismail (deaf)
2. Head of the Early Intervention Program	Mrs. Nadine Badreddine
3. Accountant / Auditing Office	Mr. Antoine Faddoul
4. Office Manager / Secretary	Mrs. Roula Zgheib / Christine Jarrouje
5. Speech Therapist / Early Interventionist	Ms. Wafa Nawar
6. Coordinator	Mrs. Karine Momdjian
7. Assistant Speech Therapist	Ms. Nadine El Khalil
8. Occupational Therapist	Ms. Lama Naaman
9. Domestic Helper / House Father	Mr. Elias Bou Mansour (deaf)
10. Nursery Teacher for Deaf Children	Mrs. Waddad Daher
11. Nursery Teacher Assistant Teacher	Ms. Vana Makarian
12. Nursery Teacher	Ms. Cosette Melko
13. Preschool Teacher – English	Mrs. Sarine Simonian / Roula Farhat
14. Preschool Teacher – Arabic	Mrs. Darine Nakour
15. Preschool Assistant Teacher	Mrs. Roula Jammous
16. Preschool Teacher	Mrs. Carole Ayoub (deaf)
17. Specialist/Teacher for the Deaf	Ms. Hanna Tahan
18. Cook	Mrs. Sabine Nakour
19. Biology & Chemistry Teacher	Ms. Zeinab Al Zarief / Lama Sleiman
20. Socials, Arabic Literature Teacher	Mrs. Rozana Zaklit
21. English Teacher	Mr. Habib Fawaz (deaf) / Judy O'Carroll
22. Math and Physics Teacher	Ms. Karma Barak / Mohammad Kanso
23. Accountant subjects Teachers	Mrs. Lena Zammar
24. Computer Sciences Teacher	Mr. Habib Fawaz (deaf)
25. P.E. Teacher	Ms. Nour Zgheib (deaf)
26. Advocacy	Mrs. Malak Reslan (deaf)

Volunteers	
27. LCD's legal advisor	Mt. Rayan Kouatly
28. Psychologist – Family Counselor	Mrs. Charlotte Khalil
29. Hearing-Aid Technician	Different settings
30. Family Counselor	Dr. Raed Mohsen

6. Statistical Data of the number of beneficiaries during 2022

Programs offered at the LCD	Number of Beneficiaries
Early Intervention Program	
Rehabilitation for Deaf Children with their Parents	32 (average - in house children) 55 approx.
The Support Group	6 - 8 families
Integrated Nursery	25 (average)
The Preschool Section	16 (average)
The Outreach Program	Unspecified
The Resource Room	Unspecified; open for all professionals
Advocacy	
	National Level
Educational Activities for the Deaf	
Sign Language Class	72 participants
High School Education for the Deaf	
Second Year	5 students
Third Year, Graduated	5 students
Technical School	
Third Year, Graduated - Accounting	3 students
Consultations	120+
Hearing Aids	175 (97 beneficiaries)
Awareness Programs about Deafness	Unspecified; National level

The Learning Center for the Deaf

Beirut – Lebanon



News & Activities of the LCD during 2022

7. News of the Learning Center for the Deaf

Introduction



The general situation in Lebanon during 2022 hasn't majorly changed from the previous year (2021), but it has unfortunately got worse. The LCD has been affected by the situation especially in the areas of finances, staffing and electricity.

The Lebanese currency has lost more than 96% of its value, therefore prices in the stores have gone up by more than 3 or 4 times. Fuel prices have also increased so much that some staff members have been seriously thinking of leaving the country for good. Already 6 staff members have left us. It was indeed sad to see them leave, although we fully understand their motives.

Despite the challenges, we are grateful to the Almighty God for His constant guidance and protection, and especially for His blessings. He knows the needs of the LCD and the needs of the beneficiaries and has always responded at the right time.

General Situation of Lebanon affecting the LCD

During the year 2022, Lebanon had only a few months with a government and a cabinet. It is interesting that the country has been able to function without a cabinet for such a long period of time. The reasons for a new cabinet not having been formed are mostly political.

The Lebanese president stepped down from office in October 2022, and to date, no new president has been elected. Once again, politicians have been fighting over the selection of a new president.



While the politicians were fighting with each other, mainly for their own interests, exchange rates kept increasing. As mentioned above, the Lebanese currency has lost over 96% of its value. To give an example, in 2019 the exchange rate was \$1 to 1,500 Lebanese pounds. But towards the end of 2022, the exchange rate had become \$1 to 46,000 Lebanese pounds. During 2021, the United Nations estimated that a quarter of Lebanon's population was struggling with food insecurity. During 2022, estimates suggested that 75% of the Lebanese population were struggling to put food on the table. According to the World Bank, the poverty rate gaps in Lebanon are between 22 and 25%, and poverty applies to an individual who earns less than \$2.15 per day.

According to the United Nations, the human rights situation in Lebanon deteriorated further in 2021. More than 80% of the country's residents did not have access to basic rights, including health, education, and an adequate standard of living (i.e. adequate housing and electricity). The World Bank has described Lebanon's crisis as a "deliberate depression," due to Lebanese leaders' mismanagement and lack of effective policy actions, and ranked it among the top three most severe global financial crises since the mid-nineteenth century.



The sharp decrease in the value of the Lebanese pound since October 2019, has severely corroded people's ability to access basic goods, including food, water, health care, and

education. Fuel shortages have caused widespread electricity blackouts, lasting up to 23 hours per day, and private generators—a costly alternative—have not been able to fill the gap, leaving large portions of the country in darkness for several hours every day. Hospitals, schools and bakeries have struggled to operate amid these energy shortages.

The Lebanese government decreased or completely removed subsidies on fuel, wheat, medicine, and other basic goods, but it failed to also implement an adequate social protection scheme to shield vulnerable residents from the impact of steep price rises. Marginalized communities, including refugees, people with disabilities and migrant workers, have been unreasonably impacted.



No one has yet been held accountable for the catastrophic explosion in Beirut's port on August 4, 2020, which killed at least 219 people and devastated half the city.

Corruption across the governments' departments is widely spread, but less so than during 2021. Banks have greatly benefited from the situation, and are not allowing depositors the full right to use the money in their own accounts, only allowing them to withdraw \$120 per month. The worst part is that banks charge \$100 for every account per month. The LCD tried to merge several accounts into one, in order to save money. But the process of merging was not easy.

The salaries of government staff members have been slightly increased but this was only enough to cover the cost of filling up their car with petrol which lasts only twice. So, the staff refused to go to work until their financial situation improved. The issue was not solved. They currently only go to work once, or sometimes twice a week, to facilitate official processes for civilians. For example, in our situation, we wanted to obtain a license from the municipality for a permit to expand the nursery area. We were planning to carry out the expansion during summer 2022. Obtaining the license for expansion work should usually take only 15 days. But due to the government staff's reduced hours and a lack of electricity, the license process was not completed in time. We have therefore had to postpone the expansion project until summer 2023. The process of obtaining the license, to date, has still not been completed. The question: who to blame, the staff members of the municipality, the government, or the politicians?

Another problem is electricity, which has been reduced to only one or two hours a day. This is a result of the government's inability to cover the costs of imported fuel to generate electricity. Until the end of 2022, the government was unable to make any reforms to solve the problem, including reforms in the electrical plants or against corruption.

Living in Lebanon is quite difficult. We still see a massive immigration of young people traveling abroad, to seek a better future, as there is unfortunately no hope or future in Lebanon.

The Impact of the Russia-Ukraine War on Lebanon

The war in Ukraine is having a great impact on Lebanon. Wheat imported from Ukraine and Russia was essential for feeding a large number of individuals in poverty in Lebanon, including the Deaf in Lebanon. Bakeries began rationing bread, and prices were inflated by 1,200% (i.e. one loaf of bread used to cost LL1,500, but by the end of the year it was being sold for LL18,000). The wheat reserve is only expected to last few months when cargo ships unloaded wheat at the harbors. Besides this, oil and milk powder were no longer available in stores. Electricity was being rationed to two hours a day, so there were no lights or elevator service for many hours each day. Lebanon was plunged into darkness, and water supplies were also affected by the lack of electricity which has impacted individuals, hospitals, etc.

Early Intervention Program

The Early Intervention Program (EIP) continues to provide support, resources and training to families of deaf children from 0-6 years of age, in addition to speech and language therapy sessions.



The number of beneficiaries varies over a period of time. During 2022, the total number of beneficiaries from the EIP was 32 children, as well as their family members. The children

receive individualized therapy sessions every week with the presence of one or both parents (other family members or close acquaintances are also encouraged to attend sometimes). While there are many benefits to one-on-one speech and language therapy, group therapy can offer a different set of advantages.

So this year, 8 of our EIP children who are enrolled in our Integrated Nursery and Preschool also benefited from group sessions. Our children are always thrilled to participate in these sessions.

In group therapy, children learn, practice, and develop alongside one another. They have opportunities to practice several different elements of communication. This helps them to improve their social interaction and communication.

As the number of EIP children is starting to increase and to be capable of supporting more families, a new speech therapist joined our team in September. She works part time and assists Wafa in a number of ways.

Also, this year we were overjoyed to be able to return our usual activities after a long stoppage due to Covid-19. In June, we resumed our support group meetings and hosted a workshop for the EIP families.

During the past year, we gave numerous consultation sessions for external cases. An average of 120 children/families/adults benefited from the consultation sessions and 97 children/adults received second hand hearing aids. We are currently sensing a higher demand for used hearing aids due to the economic and monetary crisis.



These consultations consist of formal and informal assessments, guidance, support and provision of information, referral to other professionals, school referral, hearing tests at the LCD, hearing aid donation by the LCD when needed and when available, including follow-up for the fitting of the hearing aids, and enrolment in the Early Intervention Program (EIP) if our program responds to the child's needs.

Consultations are offered in house or through phone calls.

Elena



Elena, who is 2 years old, is a sweet and smart girl. She joined our Early Intervention Program when she was only 8 months. Her hearing loss was discovered very early since her older sister Aya is also deaf.

In the beginning, Elena's family were attending one in house session per month and following the long distance program. The LCD offered Elena second hand hearing aids for her to use until she received her cochlear implant in May 2022.

Since the cochlear implantation, Elena attends 2 sessions per month and her parents apply carry-over targets and activities at home.

Although Elena's parents have been through the same experience with their older daughter, they still feel the need of support and guidance by the EIP team.

Elena is showing fast and remarkable progress at all levels.

Naya

Naya (4 years old) is a lovely Syrian girl who joined the LCD during 2022. Despite the late diagnosis of her profound hearing loss (May 2022), Naya is a fast learner. She is very friendly and easy to get along with.

Her parents found out about us through Facebook and visited us initially to ask about our Preschool program.



Her parents informed us that Naya had been rejected by two specialized schools for the deaf given that she wasn't ready.

However, the LCD team suggested she started the Early Intervention Program to practice and improve her auditory and communication skills, and at the same time prepare her for school. Naya started following the Early Intervention Program (EIP) in November 2022. By January 2023, she was ready to join the Preschool on a full time basis.

Besides speech therapy, the EIP emphasizes carry over and the role of home, and also includes services of support, information and skill building for parents. This is exactly what Naya's family was looking for.

Naya is improving at all levels and she is really happy in the LCD's Integrated Preschool. Naya is now more self-confident and experimenting with friendship for the first time in her life.

Jip & Janneke Nursery and Preschool

In the year 2022, we had around 34 children in the Jip & Janneke Integrated Nursery and Preschool; 7 of the children have some hearing loss.

We are very encouraged and blessed to observe how the children grow and develop in many aspects—academically, socially, and emotionally.

We can notice especially how they have developed their language and communication skills, and are now able to express their emotions and thoughts as well as share the new knowledge they acquire with their friends, teachers, and family.

The children in the Jip and Janneke Integrated Nursery and the Preschool bring a lot of joy to the LCD; having them around is a blessing. Despite the economic crisis, these children still come to the LCD and can benefit from our services. Parents have expressed their joy and satisfaction with these programs.



To give a brief introduction to these programs, Jip & Janneke is a Montessori-oriented Nursery and preschool. By following the Montessori Method all children are respected according to their readiness, abilities and differences at all levels. We emphasize the student-centered method, where individual differences are taken into consideration; thus, children are not pressured and can learn according to their readiness. Consequently a large portion of the time is dedicated to individual work, where children choose a material and work at it by themselves; meanwhile the teachers' role is to observe the children and guide them if they need any help. The children learn life skills such as: buttoning, zipping, pouring, and wrapping their own sandwiches, which aims to help children gain more autonomy and thus more self-confidence. The preschool is inclusive especially for children with hearing loss but also for children with different challenges.



We are grateful that we are making a difference in their lives.

Hearing Aids and Batteries

We are extremely grateful for the kind efforts conducted by our friends in Switzerland who support us — board members of the “Friends of the LCD-Switzerland (FK-LCD)” — for collecting and sending second hand hearing aids, in excellent condition, to the LCD. In turn, these will be given to persons with hearing loss, including refugees, who are unable to afford the costs of the hearing aids, free of charge.



It is amazing how our Swiss friends have sent hundreds of hearing aids, during this past year, and previous years. Whenever we have been in need of a specific device for testing hearing aids, etc., our friends have spared no effort in searching for the required item.

In addition to collecting and sending hearing aids, they have also collected various types of batteries for hearing aids, which have been in high demand in Lebanon due to the economic situation.



In the following table, you can see number of persons receiving hearing aids, whether in one or two hearing aids, with some details, as follows:

Gender	Number of Beneficiaries	Hearing Aids Quantity
Children	17	34
Women	34	61
Men	46	80
Total	97	175

Of the 97 persons receiving hearing aids, 16 refugees received hearing aids.

We are so grateful for the wonderful support of our friends in Switzerland, who understood the need and acted promptly to campaign to raise these hearing aids and batteries.

Graduation Ceremony 2022

The graduation ceremony was held at the LCD on July 7th, 2022, for 8 graduating students (5 high school students and 3 technical school students), who have passed the official

examinations set by the Ministry of Education with distinction. The ceremony touched the hearts of these students as well as the other participants in a warm and positive way.



During the summer time, these students received Baccalaureate certificates (Lebanese high school diploma) from the Ministry of Education, allowing the graduating students to go to universities of their choice and continue their educational journey, whether locally or internationally.



We are very grateful to the LCD Team as well as its friends for organizing a successful ceremony, and for giving the graduating students a memorable experience.

Celine Ajami



Celine attended the Early Intervention Program when she was younger than 2 years of age. In this program, she learned listening and communication skills with the participation of her family members. She was among the first group of children in this program.

A few years later, she began attending a school for the Deaf, where she remained until she completed the 9th grade (Brevet level). Then in 2019, Celine returned to the LCD and registered on the High School Program, and successfully completed her studies which took 3 years. In July, she graduated with distinction and also received a certificate of outstanding performance.

Celine dreams to continue her further education to a BA level. Fortunately, she was helped to travel to France and is currently registered at a university near Paris, majoring in French Pastry Art.

We are proud of Celine and wish her much success in her study career in France.

PV Solar System

As mentioned in the introduction section above, one of the main problems in Lebanon is the shortage of electricity, which is provided for only 1 or 2 hours per day. The communal generator also only provides a limited number of hours of electricity per day due to the shortage of fuel. It has indeed been a big problem for the work of the LCD which needs constant electricity during the day. This is especially the case during the hot summers when we need to turn on the air conditioners in the Early Intervention rooms, as well as in the nursery and preschool classes.



Our faithful supporter, Embrace the Middle East provided the funding for a project to install a PV solar system to generate electricity for the LCD. The system involves 36 PV panels, 3 high quality lithium batteries and inverters, which can provide 24 hours of electricity. Not

only does this mean the LCD has electricity full time, but this system will also save a lot of money that would have been spent on paying expensive electricity bills, whether from the state or the communal generator.

We are extremely grateful for Embrace's support for this project which was a successful intervention.

Montessori Material

Our Integrated and Preschool sections use plenty of Montessori materials as part of their teaching approach. These sections don't strictly follow the Montessori philosophy and approach of teaching and working given that a pure Montessori approach requires teachers to be fully trained. However, some teachers in our sections receive on-the-job training intervention, and the sections are primarily Montessori oriented as they use a large range of Montessori materials in the classroom.

Children love these materials and they are highly beneficial for enhancing concentration span, hand and eye coordination and language skills, among others.

We are grateful that these materials were donated by our supporting organization in UK—Embrace the Middle East—during 2021.



Setting up a cabinet for the Montessori Golden Beads to teach children hundreds and thousands



Practicing Montessori educational material (Math) before delivering to children



Rocky

Nadine's dog, Rocky, is extremely loved by the children at the LCD, as he is gentle and patient with them. Children in our programs naturally learn to embrace and enjoy different forms of diversity.

They learn to love nature and animals and Rocky is the present star.

Despite not being playful with children and not approaching them, they have become very fond of him.



The story of our turtle “Jip”

Jip (4+ years old) lives in the aquarium, located in one of the Preschool classrooms. The teacher, Darine, noticed that Jip wasn't eating well, due to his visual problems, which started in May. Darine spoke to a veterinarian on the phone, and the vet gave some advice, but it was not helpful for Jip. So, Darine took the turtle to the vet, who cleaned Jip's eyes, and gave him some multi-vitamins. In time, Jip started to open his eyes and could see fully once again. By the summer, Jip was happy and healthy, and could eat all by himself, thanks to the care and dedication of the teacher, Darine.



Marathon

During the year 2022, the LCD participated in two big events. The first was a 21km run (Women's Race) during April 2022. The LCD's high school students registered for the 21km run or 10km run. Their participation in this event was an unforgettable experience.



The other event—a full 42km Marathon—was held during November 2022. Some staff members and their children, as well as the students of the LCD high school, participated in the 5km or 10km run. Thanks to the beautiful weather, the day was fabulous, filled with joy and laughter. Everyone was pleased with their accomplishment.

Furthermore, Hussein ran the full marathon, and everyone waited for him at the finish line. What a great joy and encouragement. Some of the high school students were inspired and decided to run either the 21km or the full marathon next year. Hussein was indeed pleased with his performance, especially since some of his deaf friends participated alongside him in the full marathon.

3 Days of Workshops

Hussein was honored to give a presentation about Sign Language and the Media to three different groups of journalists, university trainers, students, etc., on three separate days. The presentation concentrated on the use of sign language interpreters and captioning for the deaf and hard of hearing individuals in the media. The workshop was organized by the Disability Hub with the support of various organizations.

The Disability Hub developed this workshop in order to advocate and raise awareness about disability and the media. It aims to enable media organizations and journalists to produce inclusive media content that uses inclusive language, and correct disability terminologies



based on the social model of disability. A series of workshops have been delivered to different Lebanese media organizations and media education program coordinators by using one of the Disability Hub guidelines: Inclusive Audio-visual media and information services.

Three groups of students have been selected from three different Lebanese universities to work on producing three inclusive short video campaigns. These video campaigns will depict one of the disability rights covered under the UN Convention on the Rights of people with disabilities. An inclusive policy for media organizations and media educational programs at universities in Lebanon will also be drafted to ensure that communication and media organizations in Lebanon become more inclusive.

Sign Language Courses

It has been interesting to observe that so many people are keen to learn the Lebanese Sign Language, and have registered on the sign language courses. During the year 2022, several courses took place, for both level 1 and level 2.

The purpose of these courses is obviously to learn to effectively communicate with deaf people.

The participants on these courses were from different backgrounds, professions and nationalities. Some of the participants were medical doctors, soldiers, social workers, teachers, among others, and some were simply interested to learn the language of the deaf.



Awareness Workshops

The LCD conducted several workshops and seminars for the parents of deaf children, thanks to the LCD's team.

One of the workshops was about cochlear implantation and was attended by parents of the deaf children at the LCD. This important workshop was given in collaboration with Promedz Lebanon. The children's parents were keen to find out more about cochlear implantation and its effects.

Annual School Trip - Post Ascension Day - to the Cedars

It was a therapeutically fun trip for the students, staff members and friends of the LCD. In the morning, we headed first to the Cedars of God, located in Bcharré in mountains of north Lebanon. We had planned to then visit the museum of the famous poet and painter, Gibran Khalil Gibran. However the bus unfortunately had some troubles due to dirt in the fuel and so we were unable to carry out that plan. Instead we enjoyed a nice lunch at one of the hotels near the cedars.



On the way back we stopped at a fun-fair, where the students and staff members had fun on the rides and activities. The day was completed with a delicious ice cream.

The trip was made possible thanks to the support of our Swiss friends, one of whom is the President of the “Friends of the LCD-Lebanon”, along with his son and a friend, who joined us on the day.



Macramé Plant Hanger

The LCD director Hussein made a macramé plant hanger from thin rope, which is hanging in the LCD kitchen. It holds a nice plant and adds more warmth to the kitchen atmosphere. A surprisingly successful achievement for a hobby learnt 35 years ago.

A talent given by God is highly cherished.

Our Faithful Partners and Sponsors

The LCD is ever grateful for the faithfulness and support of various organizations, associations, individuals, and friends, both locally and internationally. For without their support, the LCD would be unable to continue its work.

To name a few, here is a list of some of our faithful supporters:

1. **Embrace the Middle East—UK:** Embrace is one of our main partners, and has been supporting our services and programs for many years. It covers a substantial amount of the salaries for many staff members. Not only do they support the LCD financially, they are also keen to follow our work closely with a true sense of partnership, and provide us with encouragement. We highly esteem their support, and especially their prayers for us, and they are always ready to listen whenever we come to them with a specific problem.
2. **Friends of the LCD-Lebanon, Switzerland:** The LCD has a long and strong relationship with the Swiss foundation “Friends of the LCD-Lebanon (FK-LCD)”, on many different levels. This foundation was among the first partners to support the LCD in its inception, and they have continuously supported our work in helping with different needs. Whenever we are in need of a particular item, our Swiss friends don’t stop until they have found what we needed. A true friend in need. They are not only supporting us financially, but also by sending hearing aids, batteries, etc. We are very grateful for their support.
3. **AMT-NL:** AMT-NL is a small foundation, located in the Netherlands, which supports us when a specific project is needed. This foundation was the first to support the LCD during its initiation (founding) phase. They have greatly helped us.
4. **Wilde Ganzen-NL:** Wilde Ganzen (WG) has supported the LCD with various projects. The biggest one was the purchase of the LCD’s premises, and its expansion work. They have supported renovation work of the LCD’s building, not once, but twice. During COVID19, and Beirut port explosion, WG supported the LCD financially to ensure the continuity of the work. During 2022, WG accepted our proposal for the construction of a new setting for the Integrated Nursery with new playground facilities. We hope to start working on this project in summer 2023.
5. **Johanne van Dijk**, who used to work at Wilde Ganzen, still supports our work in many different ways. She is a lady of great heart, and who feels that the LCD is her own. Johanne together with our very dear Dutch friends **Frits and Marjolijn van der Hoeven** have worked very hard to find ways for the construction project of the Integrated Nursery to be realized; with the efforts of **Hans Wareman** of the AMT-NL. We are grateful for Johanne’s and our friends’ perseverance.
6. **Hans Silberschmidt** is a treasurer for the “Friends of the LCD-Lebanon” foundation. On a weekly basis, he has continually communicated with the LCD, either through email, WhatsApp, or telephone conversation with us, sharing his ideas and work for the LCD. Due to his health condition and limited time, he managed to find an assistant to his position, a Swiss financial specialist, Peter. Hussein and Nadine consider Hans a very good friend. In addition to Hans, the president of the FK-LCD, **Rainer Nobs**, really holds the LCD in his heart, and is a great supporter.
7. **Josephine Marriage** is an English audiologist who always supports the LCD within her capacity, both financially and in technical matters. In the past, Josephine used to come once a year to give trainings and workshops for the LCD’s staff members, along with other specialists at the LCD. Josephine is a person with a great heart.

8. And not to forget so many other **individuals and friends** who still support our work within their capacities for which we are very grateful.

Advocacy Works

The LCD, in collaboration with the Lebanese Federation of the Deaf (LFD), has been carrying on their work with the advocacy program.

Several workshops, awareness seminars, and meetings have taken place with stakeholders of different government departments in attendance. These meetings and workshops focused on the rights of Persons with Disabilities, including deaf persons. Some were conducted by the LCD alone, and other works were jointly organized with other national NGOs and Disabled Persons Organizations (DPOs).

Besides this, the LCD and the LFD have continued lobbying with stakeholders at the government level to provide minimum rights for the Deaf.



Collaboration of the LCD with other Organizations

As in previous years, besides the advocacy works for the Deaf, the LCD also collaborated with other organizations that support advocacy work for people with disability.

The LCD, also representing the LFD, is working on national projects with ILO, UNICEF and ESCWA, in partnership with other DPOs that we usually collaborate with; especially on support during crisis times.

Conclusion

When looking back, we are indeed blessed to see how many organizations, individuals, and friends have believed in the LCD's work in serving deaf children and their family members, and who have never wavered in their support. God has put the LCD in their hearts, as He knows the challenges that the LCD faced during that year. The challenges were great, but He has always responded to the problems in due time, and helped the LCD to stand on its feet, and to serve its beneficiaries in the best way.

May God bless you all.



8. Master Account 2022

The Master Accounts are prepared by the Certified Auditors, which include:

- Income / Expenditures (omitted from this site)
- Balance Sheet (omitted from this site)
- Financial Summary Sheet with the Pie Figures

Please see the following pages, depicting scanned copies of the accounts, with Auditors' stamp and signature

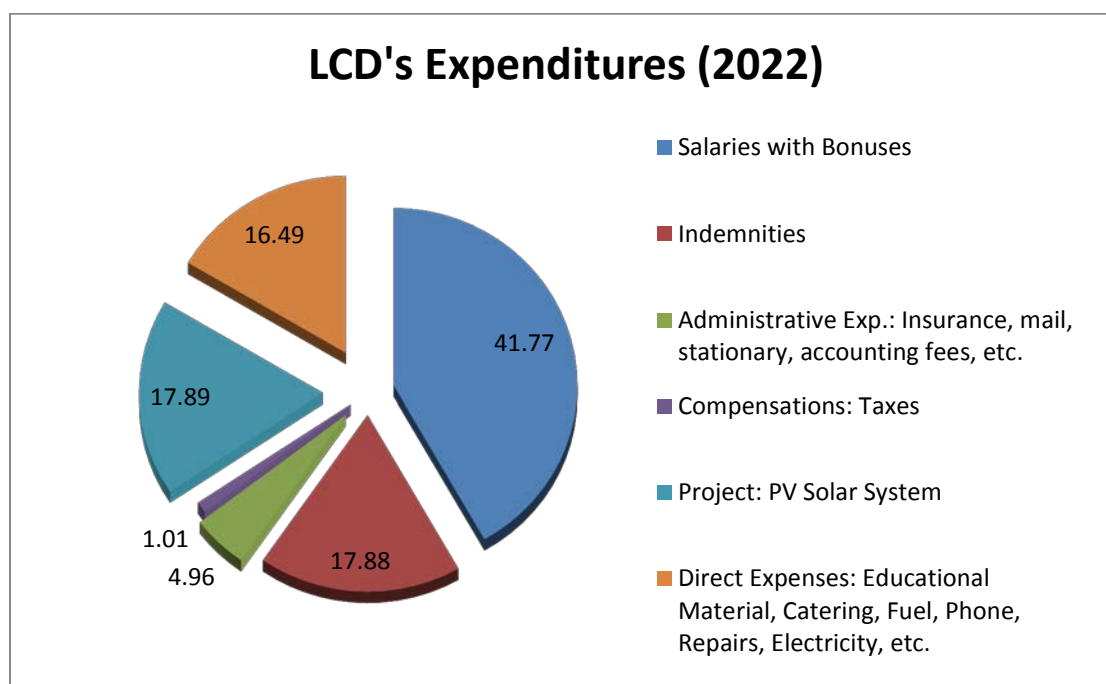
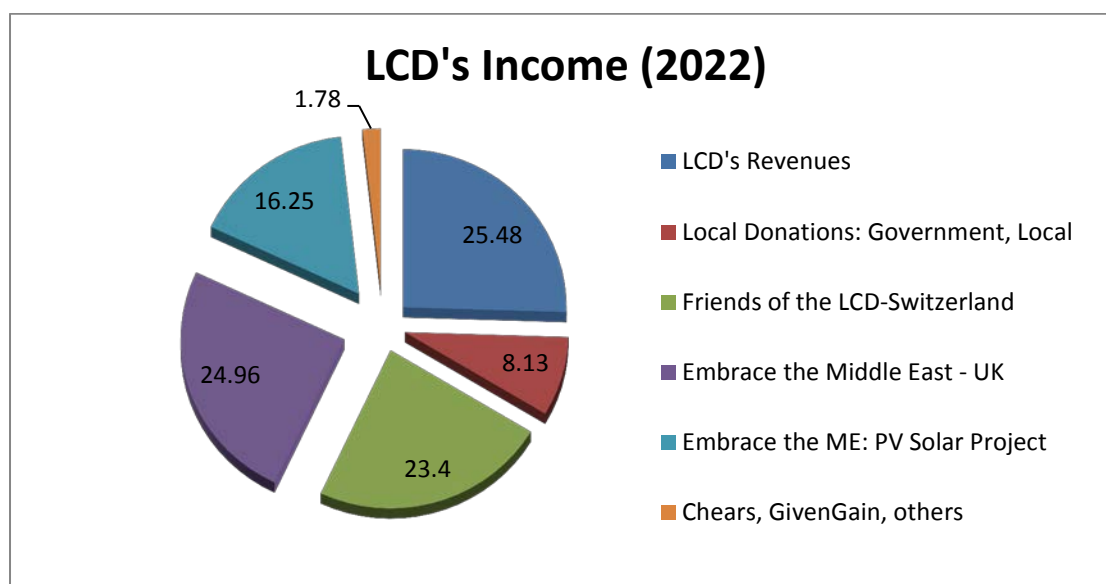




Summary of the Financial Report 2022

Description	Amount
Total Income	217,791
Total Expenditures	-234,880
Deficit Balance	-17,089

The Tables below showing the percentages of the income and expenditures during 2022



The Learning Center for the Deaf

Baabda – Lebanon

Photos during 2022



Happy children before the Christmas party



Reading a book



In one of the workshops



Sign language: I love you



A session in the garden



Free play

The Learning Center for the Deaf
Baabda – Lebanon

Photos during 2022



Art session



Montessori exercise



Preparation for maths



In the garden



Sign language session

thank you



Thank you in Sign language

The Learning Center for the Deaf

Baabda – Lebanon

Photos during 2022



Preparing cookies



Math exercise



Play in the garden



Hussein with the 2 year high school students



Awareness about deafness and culture



Various activities

The Learning Center for the Deaf

Baabda – Lebanon

Photos during 2022



Montessori Sensorial Material



Faithful Interpreter



Graduation 2022



Some faithful staff members



In an EIP session



Birthday party

The Learning Center for the Deaf

Baabda – Lebanon

Photos during 2022



After the Marathon



Group reading



Team work



In a cooking lesson



School Trip



Game with parents



Please visit us at the www.lcd-lebanon.org, for detailed information about our services and activities.

Thank you for your continuous prayers and support !!

God bless you.

The Learning Center for the Deaf

Coeur Hospital Crossing
Evangelical Church Street,
Brasilia - Baabda

00961 5 954 584

00961 3 700 584

lcd@lcd-lebanon.org

www.lcd-lebanon.org