



The Learning Center for the Deaf
مركز التعلم للصم

ANNUAL REPORT 2021

A good start in life for the deaf ...
for a better future

Prepared by
Dr. Hussein Ismail
Director



The Learning Center for the Deaf (LCD)

Baabda - Lebanon

The Annual Report 2021

Prepared by Hussein Ismail, Ed.D.
Director



Mission Statement

The LCD is a non-profit Charitable Service Organization, non-secretarian, and non-governmental Association established to promote, facilitate, and empower Deaf men and women through education throughout Lebanon.

Motto of the LCD

*Do for others as
you would like them to do for you*
Matthew 7:12

The Annual Report 2021

Contents

1. The Mission Statement of the LCD / Purpose

2. The Programs Offered at the LCD

3. Basic Data about the LCD

4. Members of the LCD (2021)

- Board of Administration
- Staff List
- Volunteers

5. Statistical Data of the Number of the Beneficiaries

6. News & Activities of the LCD 2021

- i. Introduction
- ii. An Article about the Situation in Lebanon
- iii. Lockdown during 2021
- iv. The Effect of the Pandemic Virus
- v. The LCD Team
- vi. Hearing Aids and Batteries
- vii. The Early Intervention Program
- viii. Amira and Mohammad
- ix. Montessori Material
- x. Refugees
- xi. Report on Jip & Janneke Nursery and Preschool
- xii. High School and Technical
- xiii. Sign Language Courses
- xiv. Visits to Switzerland
- xv. Our Faithful Supporters
- xvi. Training for High School and Technical Students
- xvii. Marathon
- xviii. Advocacy for the Deaf
- xix. Collaboration of the LCD with other Organizations
- xx. Installation and Maintenance Work
- xxi. Elias

7. Master Account 2021 (prepared by the certified auditor)

- Income / Expenditures
- Balance Sheet
- Financial Summary Sheet with the Pie Figures

8. Photos - Activities



1. The Mission Statement of the LCD

The Learning Center for the Deaf (LCD) is a representative organization of persons with disabilities (OPD), focusing on issues related to the Deaf, where the Deaf constitute a majority of the Board and the General Assembly (besides director and staff members being Deaf). It is an organization that offers services in parallel to advocacy work.

The purpose of the "Learning Center for the Deaf" (LCD), which is a non-profit, non-political, and non-sectarian association, located in Baabda-Brasilia, Lebanon, is to provide quality services to respond to the urgent needs of deaf persons in Lebanon, with emphasis on education, in its broad meaning, as a tool for change and advancement of the deaf community.

The team (management and teachers) of the LCD fervently believes in the empowerment of the Deaf in general, including the family of the deaf person, and reaches out to the world of the hearing with information that helps spread awareness about the Deaf and deafness. The focus is to promote deaf persons' rights, especially the right for accessibility and inclusion in society. This is done with an eye seeking justice, equal opportunities, and especially respect for human dignity.

Consequently, the LCD has initiated challenging services and programs which were not available in the country before, in order to complement existing programs and services, and thus provide better opportunities for the Deaf and their family members, whether directly or indirectly. One of the most recent pursuits focuses on the provision of Sign Language interpretation, among others.

All LCD services are meant to create change. Equally, the LCD undertakes many important right-based initiatives, by means of seeking change at the level of legislation and policies; often in partnership with other OPDs.

These services and initiatives were added to the two major and unique programs which were consecutively initiated by the LCD in 2001 and 2003, being the family-based Early Intervention Program and the High School Program.

The High School aims successfully at providing deaf young people the choice of passing the official Baccalaureate (High School) exams and heading to University, like their hearing peers.

The Early Intervention Program is a rich comprehensive program prior to school-age (0-3yrs). It is a stepping stone that empowers the family and provides them tools to surround the child with a rich environment, supportive to his/her general healthy development and well-being, with a great emphasis on communication and language. This stepping stone preemptively determines the quality of the future life of many deaf children.

For the further details of the LCD's programs and activities, please go to the website page: www.lcd-lebanon.org

and for the continuous updated information, please visit to our Facebook page: www.facebook.com/Learning.Center.Deaf.Lebanon

2. The Programs Offered at the LCD

To respond the needs of the Deaf, there are programs offered at the LCD, which are incorporating as follows:

1. The Early Intervention Program (birth to six years), which assists families of deaf children from babyhood, to prevent delay in development and mainly language, and especially to restore the relationship between the child and parents, as well as to empower the family to provide the child a healthy, nurturing and loving environment.

Other components of the Early Intervention Program are incorporated as follows:

- a. the **Support Group** for parents of deaf children
- b. the **Course** related to deafness for parents of deaf children
- c. the **Integrated Nursery** for deaf and hearing children
- d. the **Resource Room** for parents, students, and professionals
- e. the **John Tracy Clinic sequential lessons** for parents of deaf children

2. The High School Education for the Deaf, which provides the only secondary program in Lebanon, and allows the deaf to have the same right to enter University of their choice, thus promoting the image of the Deaf.

3. The Preschool Section (3 to six years), which is a regular school setting from KG 1 till KG 3, in preparation to enter the first grade level. This program that has been initiated beginning of October 2017 incorporate for deaf and hearing children.

4. Educational Activities for the Deaf, which designs to promote adult deaf people to learn and improve specific subject matters, such as English language and computer literacy, as well as socialization and a chance to empower the deaf. Also, Sign Language courses for all interested concerned are provided in this program.

5. Technical School for the Deaf (New Program), which provides technical education such as accounting, computer sciences (graphic designs, AutoCAD, Architecture, etc.) allowing the deaf to have a choice other than academic education. This program lasts for 3 years and leading for Baccalaureate Technique issued by the Lebanese Ministry of Education.

6. Advocacy, which involves in pursuing with the stakeholders to provide the minimum rights of Deaf persons across different domains.

7. Awareness programs about deafness and deaf people, which has as an objective to promote the image of deaf people incorporates activities through media, brochures, and books. Activities in regular nursery settings as well as activities in school and university settings (experiment, telling a story interacting with a deaf puppet and introducing a deaf adult teaching some signs) are provided.

8. Consultation, which provides consultations and advice for families of deaf children, as well as to deaf adults.

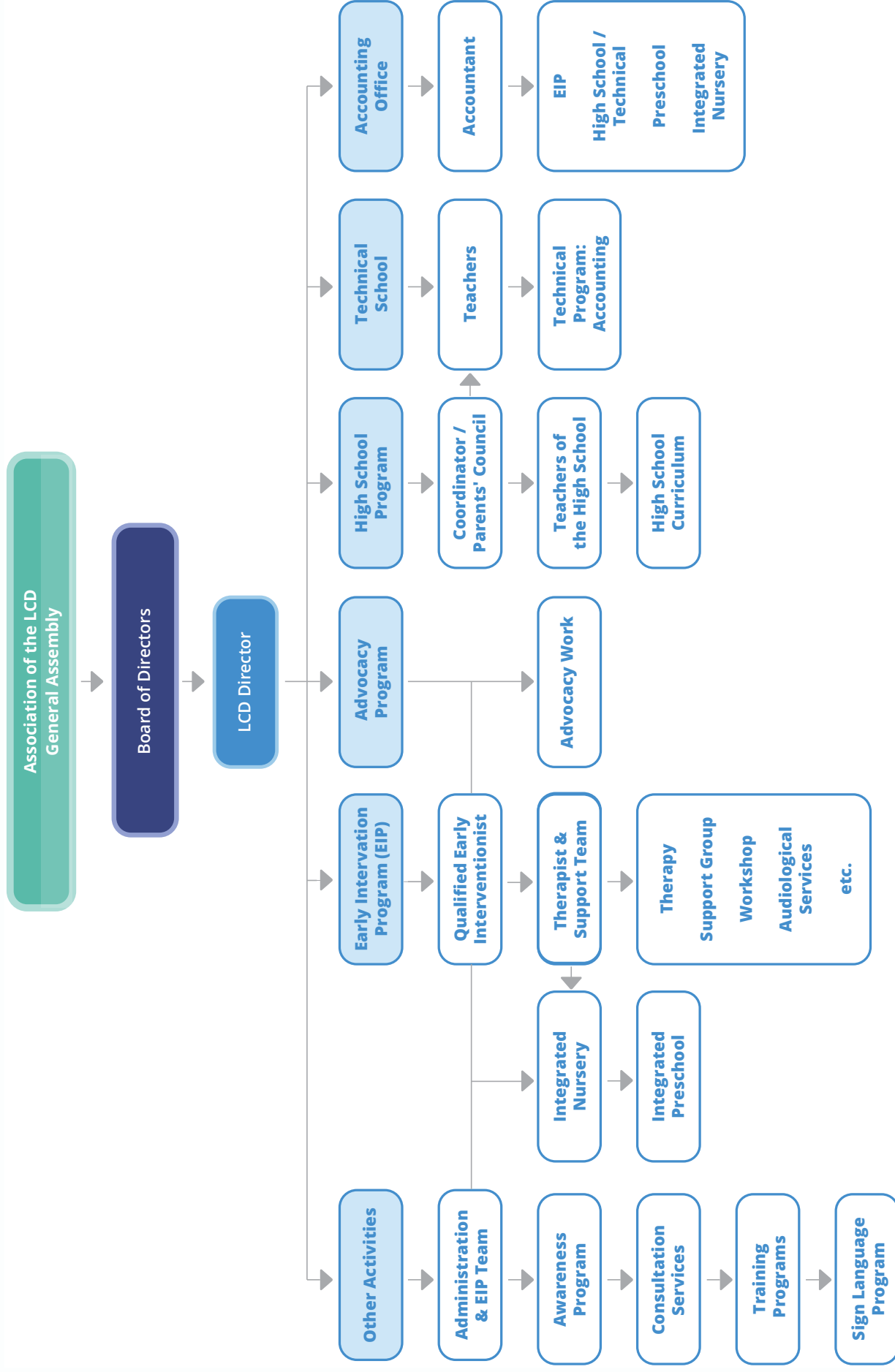
9. Sign Language Courses, which provide courses for teachers of the deaf, specialists, students of the universities, interested persons, among others, mainly for communication access for deaf persons.



3. The Basic Data about the LCD

Name	The Learning Center for the Deaf (LCD)
Date established	January 2002
Legal status	<ol style="list-style-type: none"> 1. Charity Registration Number: AD 89, established 2002 with the Lebanese Government 2. Presidential Decree No.: 15798, established 2005 3. License # 2/294, 2020 (the Integrated Nursery)
Visiting address	Sacre Coeur Hospital Crossing, Presidential Palace Road, Near Evangelical Church, Brasilia – Baabda
Contact person	Hussein Ismail, Ed.D. <i>Director</i>
Telephone numbers	00961-3-700584 / 00961-5-954584
Fax number	00961-5-954584
E-mail address	lcd@lcd-lebanon.org
Website	www.lcd-lebanon.org
Facebook	www.facebook.com/Learning.Center.Deaf.Lebanon
Type of organization	The LCD is a non-profit Charitable Service Organization, non-secretarian, and non-governmental association established to promote, facilitate, and empower Deaf men and women through education throughout Lebanon
LCD's Motto	<p>Based on the Lord Jesus's essential statement:</p> <p><i>"Do for others what you would like them to do for you".</i> Matthew 7:12</p>
Main areas of activity	Education, Rehabilitation, Consultations, and Advocacy

4. The Organization Chart of the Learning Center for the Deaf (LCD)



5. The Structure of the Learning Center for the Deaf (2021)

Board of Administration

Chairman of the Board	Ms. Caroline Haykal (deaf)
Treasurer	Ms. Najah El Hamad (deaf)
Secretary	Dr. Hussein Ismail (deaf)
Accountant	Dr. Raed Mohsen
Members of the Board	Mrs. Charlotte Khalil Mr. Habib Fawaz (deaf) Dr. Assadour Khanjian

Staff List

1. Director / Instructor	Dr. Hussein Ismail (deaf)
2. Head of the Early Intervention Program	Mrs. Nadine Badreddine
3. Accountant / Auditing Office	Mr. Antoine Faddoul
4. Office Manager / Secretary	Mrs. Roula Zgheib
5. Speech Therapist / Early Interventionist	Ms. Wafa Nawar
6. Coordinator	Mrs. Karine Momdjian
7. Occupational Therapist	Ms. Lama Naaman
8. Domestic Helper / House Father	Mr. Elias Bou Mansour (deaf)
9. Nursery Teacher for Deaf Children	Mrs. Waddad Daher
10. Nursery Teacher Assistant Teacher	Mrs. Josephine Momdjian
11. Nursery Teacher	Ms. Cosette Melko
12. Preschool Teacher – English	Mrs. Sarine Simonian
13. Preschool Teacher – Arabic	Mrs. Darine Nakour
14. Preschool Assistant Teacher	Mrs. Roula Jammous
15. Preschool Teacher	Mrs. Carole Ayoub (deaf)
16. Specialist/Teacher for the Deaf	Ms. Hanna Tahan
17. Cook	Mrs. Sabine Nakour
18. Biology & Chemistry Teacher	Ms. Zeinab Al Zarief
19. Socials, Arabic Literature Teacher	Mrs. Rozana Zaklit
20. English Teacher	Mr. Habib Fawaz (deaf)
21. Math and Physics Teacher	Mr. Hrag Hagopian / Adham Zeitouni
22. Accountant subjects Teachers	Mrs. Lena Zammar
23. Computer Sciences Teacher	Mr. Habib Fawaz (deaf)
24. P.E. Teacher	Ms. Nour Zgheib (deaf)

Volunteers

25. LCD's legal advisor	Mt. Rayan Kouatly
26. Psychologist – Family Counselor	Mrs. Charlotte Khalil
27. Hearing-Aid Technician	Mr. H. Houry
28. Family Counselor	Dr. Raed Mohsen

6. Statistical Data of the number of beneficiaries during 2021

Programs offered at the LCD	Number of Beneficiaries
Early Intervention Program	
Rehabilitation for Deaf Children with their Parents	26 (average - in house children)
The Support Group	50 approx.
Integrated Nursery	6 - 8 families
The Preschool Section	20 (average)
The Outreach Program	16 (average)
The Resource Room	Unspecified
	Unspecified; open for all professionals
Advocacy	National Level
Educational Activities for the Deaf	
Sign Language Class	51 participants
High School Education for the Deaf	
Second Year	6 students
Third Year	5 students
Graduated	
Technical School	
Second Year - Accounting	3 students
Awareness Programs about Deafness	Unspecified; National level

The Learning Center for the Deaf (LCD)

Baabda – Lebanon



News & Activities of the LCD during 2021

7. News of the Learning Center for the Deaf

Introduction



The year 2021, for Lebanon, was indeed a challenging one and in some ways was not a good year for us for a number of reasons.

Similar to 2020, and beside the pandemic, Lebanon has faced several challenges which in brief, were generally going from bad to worse.

According to the report of the UN, it was estimated that 78 percent of the Lebanese live below the poverty line – some three million people – with 36 percent of the population living in extreme poverty. Almost a quarter of the population was not able to meet their “dietary needs” by the end of last year. Many have lost their jobs due to the economical situation. Several shops and business centers have permanently shut down. This resulted in thousands of Lebanese losing their jobs.

The Lebanese currency has lost its value to by least 90%, 95% towards the end of 2021. Just to get an idea, the exchange rate of the Lebanese Lira against US\$ was, in 2020, 1,500 per US Dollar. Towards the end of 2021, the rate became 28,000 per US Dollar and has even reached 30,000. The reason for this escalation is mainly political as well. So, the minimum wage of a regular worker was at least equivalent to 475 US Dollars, but towards the end of 2021, the wage became 24 US Dollars. That is why, many Lebanese became poor and the economic situation has reached the edge of disaster.

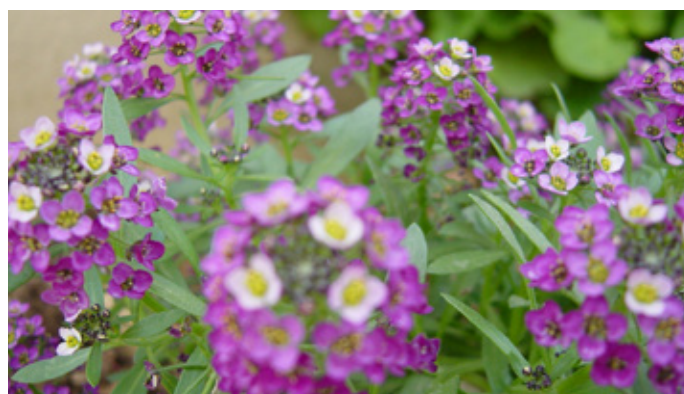
The severe neglect and high rate of corruption have intensified the sense of despair, and the suffering continues to increase and so does the youth immigration, which has reached a dangerous level, which we sense at the level of health service and the shortage in teachers, etc.

The staff members of the LCD found it quite challenging as well as they receive their salaries in Lebanese Liras. Thanks to the support of the expatriate donations, we were able to give extra funds for the staff members, just enough to maintain their basic needs.

The prices of the basic needs in the groceries are extremely high; almost 1,200% more expensive than in 2020. We learned that only 15% of the Lebanese can afford meat.

During 2021, we faced electrical shortage due to the fuel shortage, which only provided 2 hours per day. For cars, we had to wait for almost 6 hours to fill our tanks. Many times, we had to park our cars at night in the queue in front of the gas stations which close around noon, to be able to fill our cars with gas before work, and sometimes we were forced to be late to reach work due to the obligatory waiting. On a daily basis, during the summer time, we observed a long queue, of at least 2km, of cars before each gas station, therefore so called "humiliation queue". Sometimes, gas stations were closed, some Lebanese had to buy some gas from the black market which was 3 times more expensive than the usual high price, sold at the gas stations. The Lebanese Government didn't do much to aid this problem, as the politicians were still fighting amongst each other; they were mainly interested in their own power, and not the welfare of the country.

Although the new Government was formulated during September 2021, it was only in January 2022 that the cabinet (ministers) had the chance to have an official meeting, after several trials



Plants from the Garden of the LCD

by the Prime Minister and the Lebanese President. The ministers didn't want the meeting to happen for some political reasons.

Beside these problems, we had the challenge of shortage of bread and medicines. The hope of living in Lebanon could not be seen by the majority of the Lebanese. Therefore, many of them have decided to leave Lebanon for good.

COVID19 was an element that aggravated the situation naturally.

Again, some people encouraged Nadine and I to leave the country as well; something we do not wish to consider as we feel we still have a calling to serve the deaf, and we can't imagine turning our backs on them. God has placed this mission and purpose in our lives.

The LCD has naturally been affected by the situation; especially by COVID19 which affected the program that auto-generates income, which is the inclusive Nursery and Preschool, where some families have left Lebanon and the precaution measures also creating challenges. Luckily, friends as well as the supporting organizations have rushed to give a hand and have worked hard to make sure we remain sustainable, for which we are very grateful and thankful

Article regarding the situation in Lebanon – “Lebanon Today” site, by E.G.

“ I returned from Lebanon on Monday 31 May and I can say that the situation has worsened further. From the North to the South of the country I saw long queues in front of the petrol stations, and customers contending for fuel. Often the distributors run out of supplies already in the middle of the day, and close to the public. This is because the Bank of Lebanon has stopped paying suppliers: loaded ships are parked at the port of Beirut waiting for payments to be made and fuel can be unloaded and distributed. At the moment the fuel, along with the drugs and some foodstuffs, it is subsidized by the state due to the large devaluation of the Lebanese lira. However, the imminent abolition of these measures is expected, because soon the state will no longer be able to cover the difference in price. The shortage of medicines is even more serious: in hospitals there is a shortage of anesthetics to carry out surgical operations and pharmacies do not have most common drugs.

Since my last visit, exactly one month ago, beggars on the streets of central Beirut have tripled. Syrian refugees, (currently 1.5 million, according to the latest United Nations estimate) who were already living in a precarious situation before the crisis, are in even more serious conditions. Syrian women and children beg in the street organized by a real racket.

The middle class has seen their life savings evaporate from banks: they can no longer access their money and it is not clear if and when savers will be able to get their money back. On the other hand, those who counted on their salary or pension have seen their monthly salary cut by more than ten times, again due to the devaluation of the Lebanese Pound.

In all this, the politicians in charge are unable to form a new government, after the last one in office resigned on August 4, 2020, in the aftermath of the terrible explosion that destroyed the port of Beirut. Without a government, international institutions and foreign investors do not have enough guarantees to intervene in the country, which, in the absence of changes, will inevitably be left to itself. ”

Lockdown during 2021

During the first 2 months of 2021, the LCD was forced to close its doors, as the lockdown was enforced by the Lebanese Government. Despite being lockdown, the LCD tried to serve the beneficiaries through online sessions and phone calls.

During the lockdowns, the nursery teachers prepared some video clips to be given to parents of the children to do the interventions at home. The teachers instructed the parents on what to do with the activities at home. The Preschool teachers also did the same, but did some online sessions with the children as well, which was not easy. For the high school students, they had the online sessions, on a full-time basis, and didn't miss a single day. Some of the students did miss some sessions due to the electricity and/or Internet problems.

The Effect of the Pandemic Virus

During the year, some staff members and the students were affected with the COVID19. Fortunately, they were not in serious health conditions, and had to stay home for a couple of weeks.

Because they had contracted the virus, most other staff members of the LCD had to perform the PCR tests, making sure they were clear of the virus. Thank God that they were not infected, as the result turned out to be negative.

The LCD Team

Despite these several challenges, especially during economical and the pandemic virus, the LCD team members (across different programs) were really faithful, wonderful and were really committed to do the services for the Deaf and the children. They were ready to do any tasks or assignments when asked of them. We were and are still blessed to have such a team as we share the same purpose and goals.



Hearing Aids and Batteries

During 2021, as previous years, our friends in Switzerland, the board members of the “Friends of the LCD-Switzerland (FK-LCD)”, have been doing a great job by collecting good conditioned secondhand hearing aids to be given to the LCD, so that we would give these hearing aids to persons with hearing loss, including refugees, who couldn’t afford costs of the hearing aids, free of charge. The FK-LCD has sent hundreds of hearing aids during that year, for which we are very grateful.

Also, they have given us a special device—test box—to test hearing aids. This device was given by a firm in Switzerland, in the same town of the supporting organization.

Due the economic situation, batteries for hearing aids were in shortage of supply and therefore the demands of these were in high need. We have asked the friends of the FK-LCD to provide the batteries as well, in which they accepted and have provided hundreds of packets of batteries. They were transported through friends, family members, or persons coming from Switzerland who were willing to take these batteries, including hearing aids. Photos were taken to be shared with our friends in Switzerland.



Deaf persons would come to the LCD to receive these hearing aids and batteries; they were so pleased.

We are so grateful for the wonderful support of our friends in Switzerland, who understood the need and who acted promptly to the campaign to raise these hearing aids and batteries.

The Early Intervention Program

The Early Intervention Program (EIP) is designed for parents of deaf babies and young children from 0-6 years of age. Besides speech and language therapy, the EIP greatly emphasizes on parental guidance and the role of the home, and also includes services of support and information and skill building for parents.

After the outbreak of the COVID-19 we learned gradually how to cope with the situation.

In 2021, we had only one lockdown from January 1st till the mid of February. During this period some activities were suspended, adjusted or adapted.

EIP sessions were switched to Tele-therapy



for some children (Zoom, WhatsApp video call).

Also, individualized home targets and activities for each child and family were given through phone calls. The goals were updated or adjusted every 1 or 2 weeks based on parental feedback and recorded videos of the child.

At the present, therapy sessions were taking place at the LCD with all the required precautions.

This year we have 6 from our EIP children integrated in our Nursery and Preschool.

Currently, the support group for parents is suspended. We had once a Zoom meeting for all the parents. Counselling sessions are available to each family privately with our volunteer psychologist on demand or when needed.

Besides the challenges encountered due to COVID-19, Lebanon is still encountering a big economic and monetary crisis, which caused remarkable challenges to the majority of Lebanese families. Therefore, a significant number of families are not able to contribute to any of the EIP or even reach the LCD (high transportation cost).

Under the EIP we have consultation sessions which are offered for children and adults other than the LCD's families.

During this year, there were numerous sessions of consultations for external cases. However, due to the COVID-19 pandemic a remarkable number of consultation were done through phone calls.

Despite all the inconvenience and challenges we faced this year, we were able to carry on our program and help and support an important number of children and adults.

Amira



Amira a 5 year Palestinian girl comes from a very sweet family, whose father and mother are both deaf. Amira has an older brother called Salim who is also deaf. When she first came to the LCD, Amira had almost no oral communication and was using sign language to express herself.

Amira has been following our Early Intervention Program and attending our integrated preschool since September 2020. After several months of intervention, she showed remarkable and fast progress. At the present Amira evenly expresses herself using spoken and sign languages. She is a fast learner and very friendly and easy to get along with.

Amira really loves her teachers and therapist. She regularly sends them WhatsApp messages to express how much she loves and misses them especially during lockdowns.

Mohammad

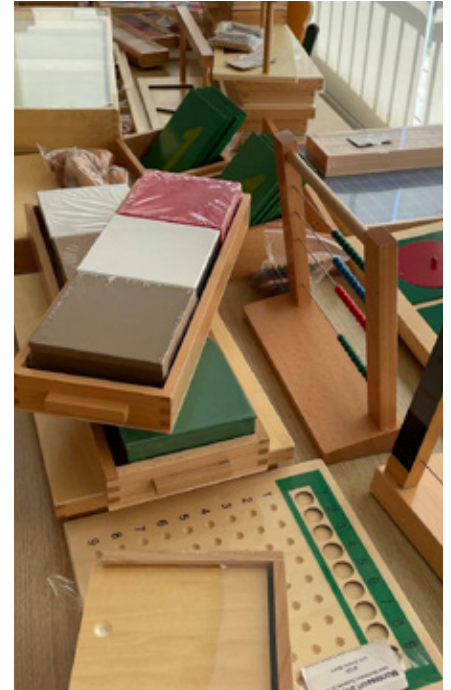


Mohammad a cute 3 year old boy has recently joined the LCD. This September, his family decided to move from the South to Beirut so that Mohammad can attend our integrated preschool and Early Intervention Program. Since Mohammad started following the EIP, he is improving at all levels. He is also enjoying new friendships in the preschool and gaining more self-confidence.

Every early intervention session, Mohammad loves to bring with him a toy, a book or an object to share with his therapist. During one of the sessions, Mohammad noticed that his therapist's Christmas tree was missing the star. So the next session, he brought salt dough, shaped it into a star and placed it on top of the tree. This surprise made his therapist very happy.

Montessori Material

After waiting for some years for a sponsor to cover up the costs of the Montessori Material and Apparatuses for the Preschool classes, we were so happy and thrilled that the Embrace the Middle East – UK has accepted to sponsor these apparatuses



Seven large boxes, full of these apparatuses, were arrived at the LCD, and the teachers were delighted to start unpacking the Montessori material, and distributed them to the classes, according to the age groups. Also, the Embrace the Middle East has supported for a training course for one of our teachers on Montessori Method.

We are thrilled with this initiative, as it taught us to be creative, to compensate for the missing material.

Refugees



The LCD has supported refugee deaf children and their family members in different ways. Among these provision of hearing aids and batteries.

We are grateful to the Lord for the opportunity of helping make a little change in the lives of these refugees, equally to other people who benefit from our support services.

Report on Jip & Janneke Nursery and Preschool

The children in the Jip and Janneke Integrated Nursery and the Preschool bring a lot of joy to the LCD; having them around is a blessing experience. Despite the pandemic and the economical crisis, these children still come to the LCD and can benefit from our services. Parents expressed their joy and satisfaction about these programs.



Jip & Janneke is a Montessori-oriented Nursery and preschool. By following the Montessori Method all children are respected according to their readiness, abilities and differences at all levels. We emphasize the student-centered method, where individual differences are taken into consideration; thus, children are not pressured, while they learn according to their readiness. Consequently a large portion of the time is dedicated to individual work, where children choose a material and work at it by themselves; meanwhile the teachers' role is to observe the children and guide them if they need any help. The children learn life skills such as: buttoning, zipping, pouring, and wrapping their own sandwiches, which aims at helping children gain more autonomy and thus more self-confidence. The preschool is inclusive especially for children with hearing loss but also for children with different challenges.



The academic year 2021 was a tough one from several aspects; first, the invasion of the COVID19 changed everything, as we had to stay at home for about two complete months because of the lockdown. It was so hard to find an exchange as our approach is Montessori and we believe in the importance of hands-on activities, so switching to complete online system was almost impossible. We tried to send activities that children could do with their parents, along with some worksheets that they could work on at home and also having few online meetings to interact with each other and have some crafts. Later on, we tried to compensate whatever the children had missed by having individual sessions with the children; where each child would come to school for about two hours whereupon we would work with them individually and assign some homework that they could apply at home. But it wasn't easy at all to set a schedule that would suit all the parents with their work schedule.

Second, the economic crisis influenced everybody. Everyone around was stressed as we had a tremendous rise in prices which affected everything directly or indirectly. We felt that the change of system was difficult for the children as it was unexpected. In summary, 2021 was not easy because of all the many expected events.

High School and the Technical School



Despite the pandemic virus, the high school and the technical school have continued to operate. Sometimes, they had to do the online lessons, given by teachers, which covers 100% of the schedules assigned for these programs. Students need to study at least 6 sessions a day, whether in class or through the online sessions.

Some teachers of these programs were not really satisfied with the idea of doing the lessons through the Internet, as the interaction between the students and teachers are limited. Some students did

well but others found it difficult to understand the lessons through the online sessions. In addition to this, sometimes they couldn't participate to the online sessions due to the Internet and the electricity problems. Their weaknesses had to be compensated when they returned to the classes in April and stayed on until mid-July 2021. Fortunately, they all passed the final examinations.

In October 2021, 6 new students have enrolled into high school program.



High school students of Grade 10 and 12 had the opportunity to visit the Antonine University in Hadath to see different departments particularly business and laboratory. Four of the students already decided to major in dentistry, one in business, others in sport, some haven't yet decided.

Many thanks to Antonine University for this great opportunity.

Sign Language Courses

Amazingly, there was a great growing interest by hearing persons wanting to learn and participate to the sign language courses, and the number of those interested was high. Some participants were teachers, bankers, specialists, among others.



thank you



The LCD has provided sign language courses in 2 levels—beginner and intermediate levels. These courses will give participants, upon the completion of the courses, the ability to communicate with Deaf persons.

Sign language classes are also given to the Preschool children. It was indeed a fun experience for the children; also given meaning since one of the teachers is deaf herself.

Visits to Switzerland

For more than a year and a half, Hussein and Nadine couldn't travel due to the pandemic. During September 2021, they were invited to Switzerland to attend some meetings and Mission Sunday, held in St. Gallen. This invitation was made possible by the supporting organization "Circle Friends of the LCD (FK-LCD)". On Friday evening, they were invited by the President of the FK-LCD, Mr. Rainer Nobs, and his wife, Gabriela, to have fellowship at their home in a beautiful town. On Saturday noon, they were invited by the Treasurer of the FK-LCD, Mr. Hans Silberschmidt, and his wife, Christa, who surprised them with a treat of having lunch in a lovely restaurant, in the special Swiss compound, containing bakery, school, cheese factory, chapel, farm, etc. On Sunday morning, a church service for the deaf was held, followed by a lunch. In the afternoon, the Mission Sunday was held, where the FK-LCD members participated to the General Assembly meeting. After giving an introductory talk by the President and the Treasurer, Hussein gave a report about the situation of Lebanon and the LCD. Hussein and Nadine were so happy to meet the faithful board members of the FK-LCD and some good old friends during that day, of whom one of them was Rosemary Nanny, who was like a mother for Hussein during his infancy at the residential school.

On Monday morning, after a meeting, Nadine and Hussein went to stay, for few days, with their daughters, Shaden and Jade, who live



in Zurich, before they returned to Lebanon. Jade had left Lebanon to live in Switzerland after her trauma from the Beirut explosion where she was in her work place that was demolished. Friends offered her work in Zurich and she is doing very well.

During November, Hussein travelled again and participated in the Congress in Lausanne, Switzerland, organized by the International Committee Sports for the Deaf (ICSD) for 2 full days (10 hours on each day). During the first evening, to Hussein's surprise, he was so pleased to have an evening fellowship with Rainer Nobs and his wife Gabriela in a restaurant in the same hotel. Rainer is a great supporter of the LCD.

Before attending the Congress, Hussein had a one-hour meeting with Hans Silberschmidt at the Zurich's train station, where Hussein received boxes of batteries for hearing aids, as well as a box of the special device for testing hearing aids. He was so moved by Hans' dedication to travel all the way from his home town to meet Hussein at the train station, especially Hans' support for the LCD for many years. His gestures and keen care will always be cherished.



Other Faithful Supports

A main partner that we also highly appreciate is Embrace the Middle East - UK. It is very easy to have a close relationship with our partners in "Friends of the LCD-Switzerland", the small organization whose goal is to support the LCD's work. This relationship is based on mutual respect and devotion and due to their care for our needs and to their faithfulness in supporting our work.

It is more surprising to have such a quality relation with a larger organization like Embrace the Middle East-UK, where staff and administration follow our work closely with a true sense of partnership, and provide us encouragement and different kinds of support in addition to financial support. We love how they pray for us and are ready to listen to us whenever we approach them with a specific problem.

Another faithful long-term relationship is with Wilde Geese, especially due to the great commitment of the previous Program Director, Mrs. Johanne Van Dijk who considers the success of the LCD her own, and is always devoted to supporting us. Johanne together with very dear Dutch friends Frits and Marjolijn van der Hoeven have worked very hard to find ways for the extension project to find a way to be realized; with the efforts of Hans Wareman of the AMT-NL; a small organization initiated by Hussein's Dutch foster-father,

which helps the LCD specifically like Friends of the LCD-Switzerland (FK-LCD). Thanks to Johanne's and our friends' perseverance, this may be possible.

Our deaf friend in UK, Herbert Klein, continued to support the LCD and the LFD in his own capacity, for which we highly appreciate. During the past year, he managed to collect some funds and donated through the foundation—Stewardship UK.

Training for High School and Technical Students



The LCD is grateful to the Association ProAble for providing 15 hours of training on "Mindset Readiness and Career Guidance", during May-June 2021, conducted by their team "ProAble Job Integration", a program designed by ShareQ - NGO.

The training is related to communication, attitude, problem-solving skills, techniques on related job searching, CV preparation, job interview, among others.

The High School and the Technical students have learned and benefited from this training tremendously.

Marathon



After 2 years of Marathon suspension due to the pandemic, we were so happy that during November 2021, the run was made possible thanks to the Beirut Marathon Association that organized Marathon of 42km and 21km run.

Hussein participated and ran the full 42km course, and fortunately completed the race. He was particularly happy that one staff member of the LCD, and a great supporter of the Lebanese Federation of the Deaf (LFD), Habib Fawaz, who is deaf, ran with Hussein on that day.



Also, other deaf persons ran for 21km on the same day, who were Habib's wife, Carole, a Preschool teacher at the LCD, a Technical student, Malek, and a board member of the LFD, Saeed. It is great that the Deaf are gradually joining this healthy and free activity.

That day was a great and a memorable experience.

Advocacy Works

The LCD, in collaboration with the Lebanese Federation of the Deaf (LFD), were still carrying on their work for the advocacy program.

Besides this, the LCD and the LFD were still lobbying with stakeholders at the Government level to provide minimum rights for the Deaf.

Collaboration of the LCD with other Organizations

Besides the advocacy works for the Deaf, the LCD also collaborated with other organizations that support advocacy work for people with disability.

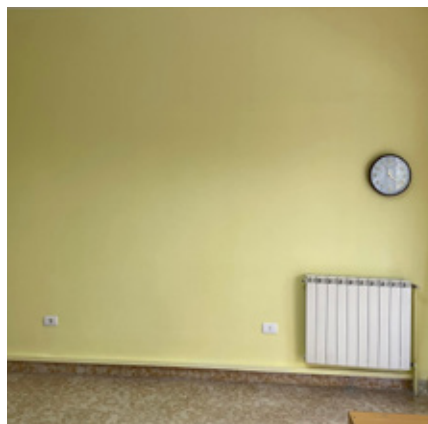
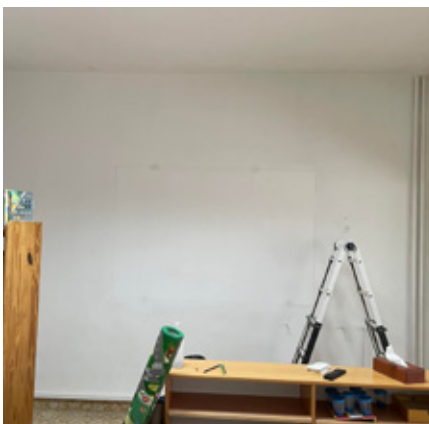
The LCD, also representing the LFD, is working on national projects with ILO, UNICEF and ESCWA, in partnership with other OPDs that we are usually collaborating with; especially on support during crisis times. We also collaborated with the committee working on vaccination accessibility for the Deaf and other persons with disabilities.

Installation and Maintenance Works

As in the previous years, maintenance and installation works never cease to end. We have done so many of these, most of which needs to be repaired, updated, renew, and installed. To name few, we have done maintenance and repairing work of the playground facilities, and the installation of the cabinets and shelves, to place educational materials.



Repair of the Playground facilities



Installation of the cabinets and shelves

Elias



Our faithful staff member, Elias, who has been waiting to get married for over 18 years, has finally got married. This happened during August 2021.



Despite the many challenges as described in the introduction above, the LCD has stood on its feet, to serve its best to the beneficiaries and the refugees. As in many previous years, the LCD is like an island of peace, solidarity, sharing and care, amid the chaos that Lebanon has experienced during the year. We are grateful to the Almighty, as it is our wish to serve all within our full capacity, and for them to receive better quality services and programs, thus leading them to a better future.

We are also grateful for so many friends believing and supporting us in many different ways. Special thanks go to organizations that support our work, such as Friends of the LCD-Switzerland, Embrace the Middle East-UK, AMT-NL, and Wilde Ganzen-NL, for without their support; we wouldn't know how we could continue our services.

May God bless you all.

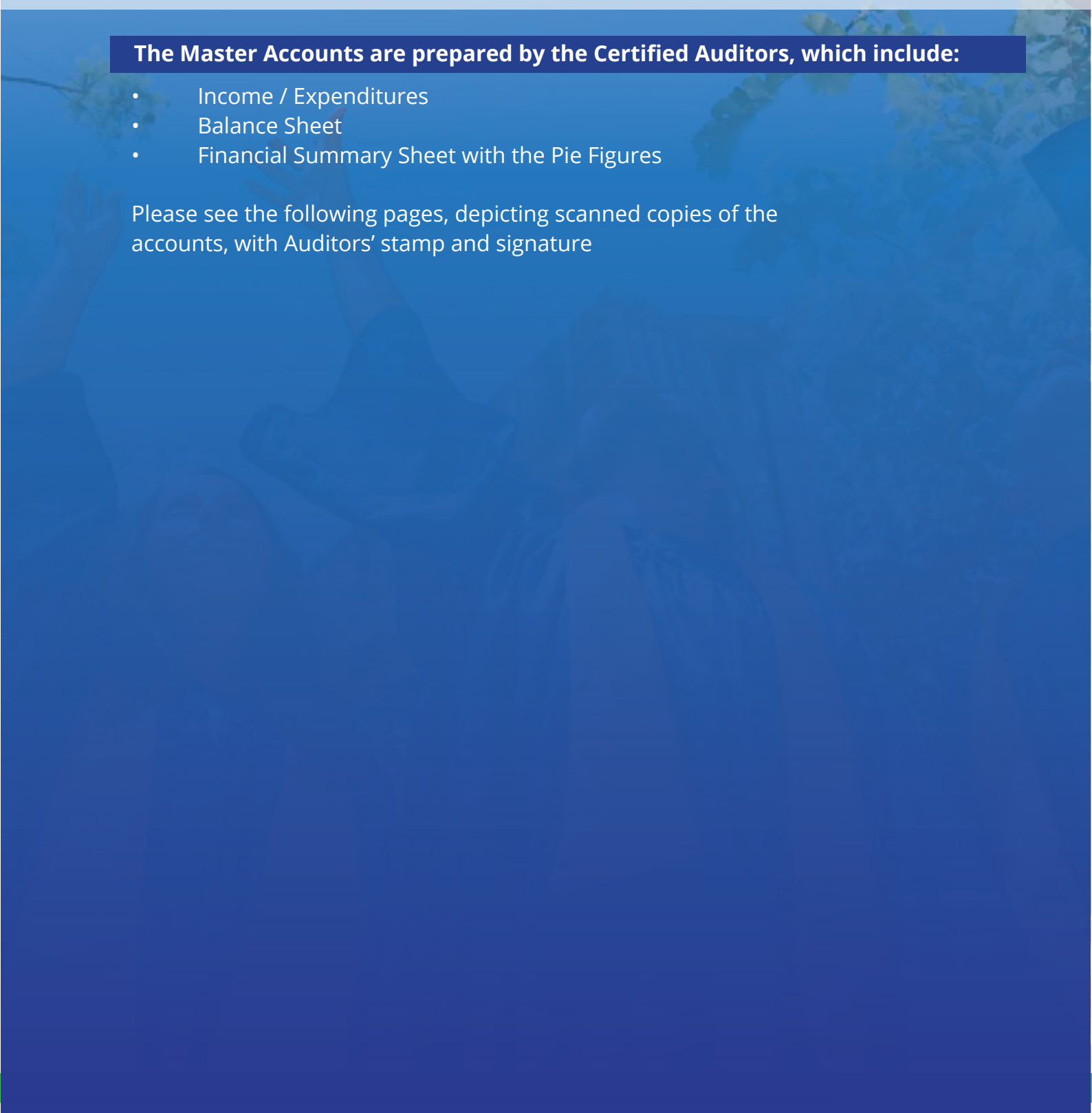


8. Master Account 2021

The Master Accounts are prepared by the Certified Auditors, which include:

- Income / Expenditures
- Balance Sheet
- Financial Summary Sheet with the Pie Figures

Please see the following pages, depicting scanned copies of the accounts, with Auditors' stamp and signature

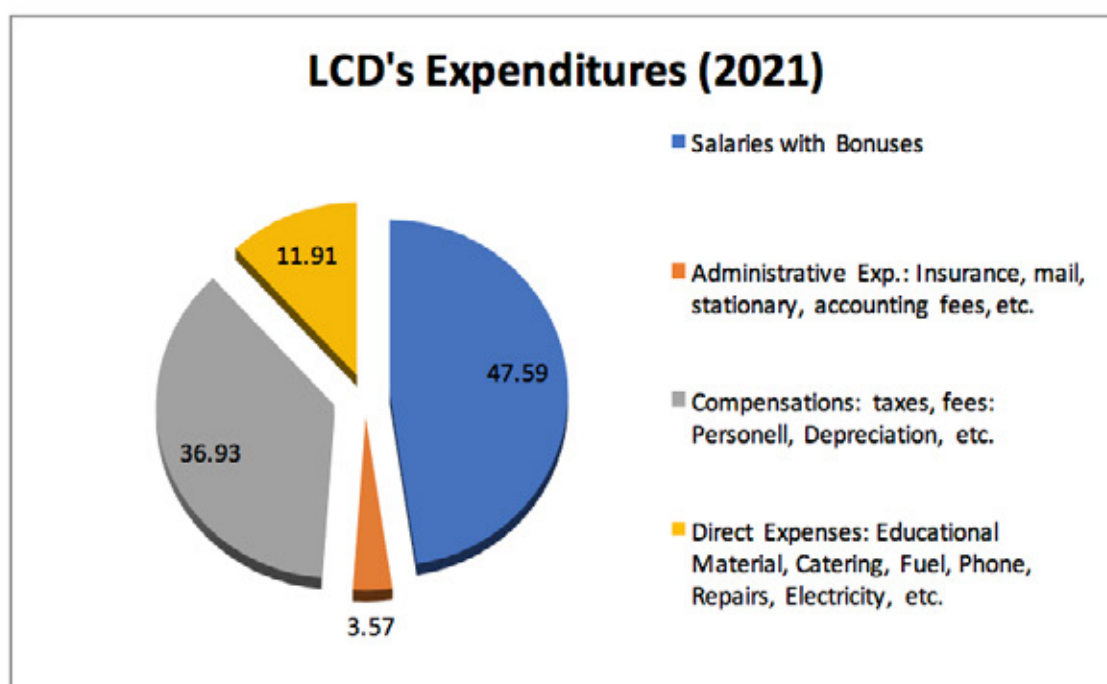
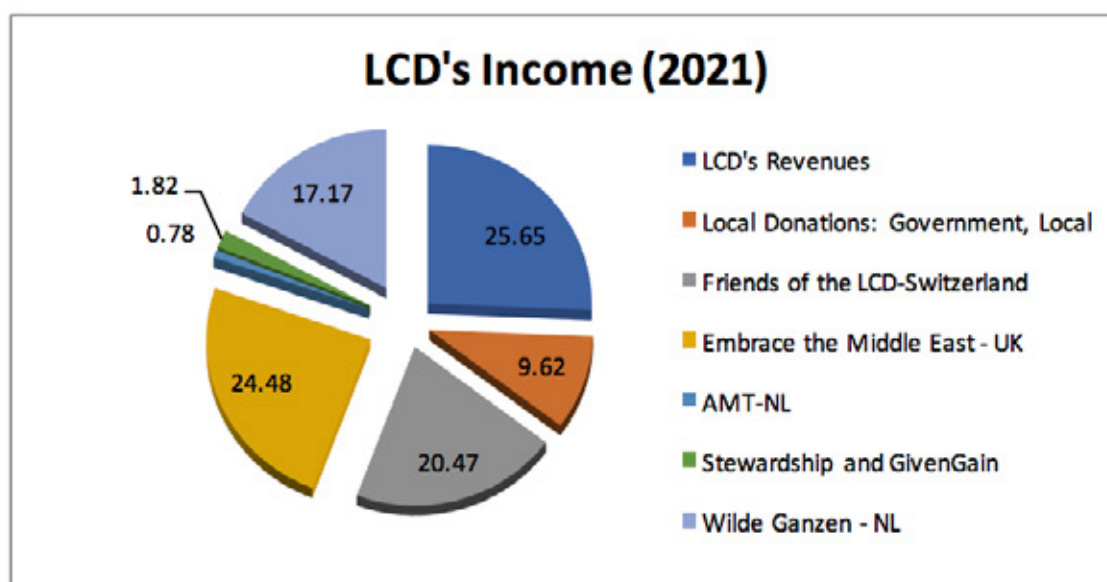




Summary of the Financial Report 2021

Description	By Official Rate in US\$
Total Income	211,846
Total Expenditures	-158,076
Balance	53,770

The Tables below showing the percentages of the income and expenditures during 2021



The Learning Center for the Deaf
Baabda – Lebanon

Photos during 2021



Garden view



Celebrating Mothers' Day



Olive, from our garden



Playtime



Before the summer holidays



Reading time

The Learning Center for the Deaf
Baabda – Lebanon

Photos during 2021



Outdoor activities



Unpacking Montessori Material



COVID19 measures



Practical Live Exercises



Fun Games



Fine and Motor Skills

The Learning Center for the Deaf
Baabda – Lebanon

Photos during 2021



Board meeting



Face painting



Independence Day



Cleaning Day



Math Activity



Webinar Session

The Learning Center for the Deaf
Baabda – Lebanon

Photos during 2021



Practical Life Exercises



Reading in the garden



Repairing work on Saturdays



Summer activities



Preschool teachers' meeting, as seen from
CCTV



EIP Session

The Learning Center for the Deaf
Baabda – Lebanon

Photos during 2020



Study time



Fun with water: summer activities



Battery and Hearing Aids Project Supported by FK-LCD Switzerland



Please visit us at the www.lcd-lebanon.org, for detailed information about our services and activities.

**Thank you for your continuous prayers and support !!
God bless you.**

The Learning Center for the Deaf

Coeur Hospital Crossing
Evangelical Church Street,
Brasilia - Baabda

584 954 5 00961

584 700 3 00961

lcd@lcd-lebanon.org

www.lcd-lebanon.org